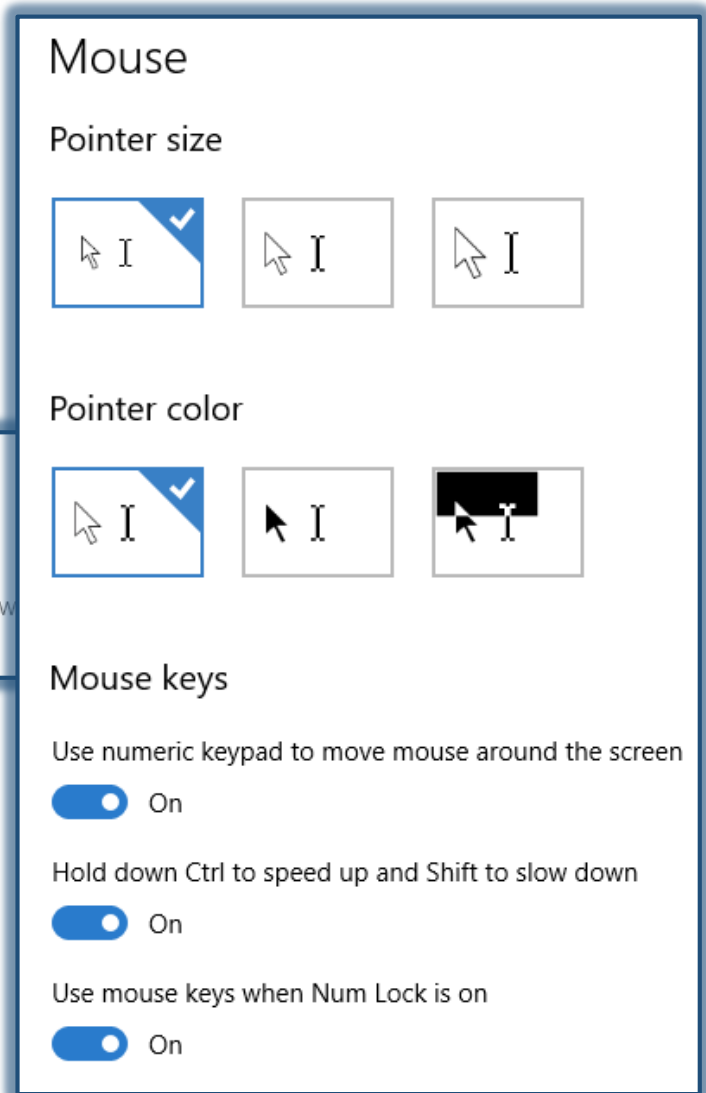
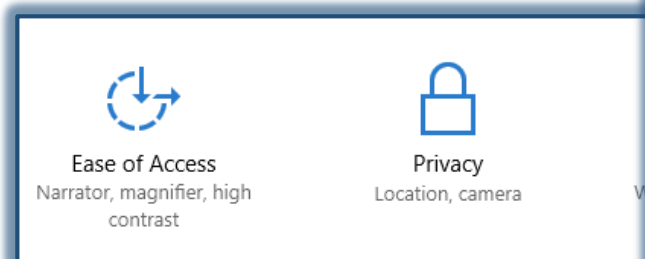


Accessibility-Mouse

In this section of the Ease of Access Center, you can see the visual options such as switching on Windows animations, showing Windows background, selecting the time duration for the appearance of notifications, and adjusting the thickness of the cursor.

SPECIFY MOUSE SETTINGS

- ✚ Click the **Start** button.
- ✚ Click the **Settings** icon on the left side of the **Start Menu**.
- ✚ The **Settings** window will display.
- ✚ Scroll down the page and select **Ease of Access**.
- ✚ The **Ease of Access** window will display.
- ✚ Click the **Mouse** link.



- ✚ The **Mouse** window will display.
- ✚ To change the **Pointer Size**, click one of the icons.
- ✚ Click one of the icons under **Pointer Color** to change the color.
- ✚ Select from the options under **Mouse Keys**.

- ✧ **Turn on Mouse Keys** – This option can be used to control the movement of the mouse pointer by using the numeric keypad.
- ✧ **Activate a Window by Hovering Over it with the Mouse** – To make it easier to select and activate a window, turn this option on. The window will then be activated by pointing at it with the mouse rather than by clicking it.
- ✧ **Prevent Windows from Being Automatically Arranged When Moved to the Edge of the Screen** – This will prevent windows from automatically resizing and docking along the sides of the screen when they are moved there.