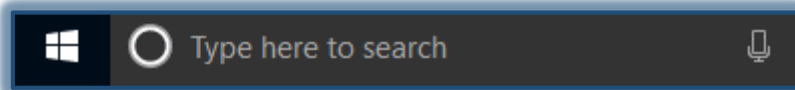


Setup Speech Recognition

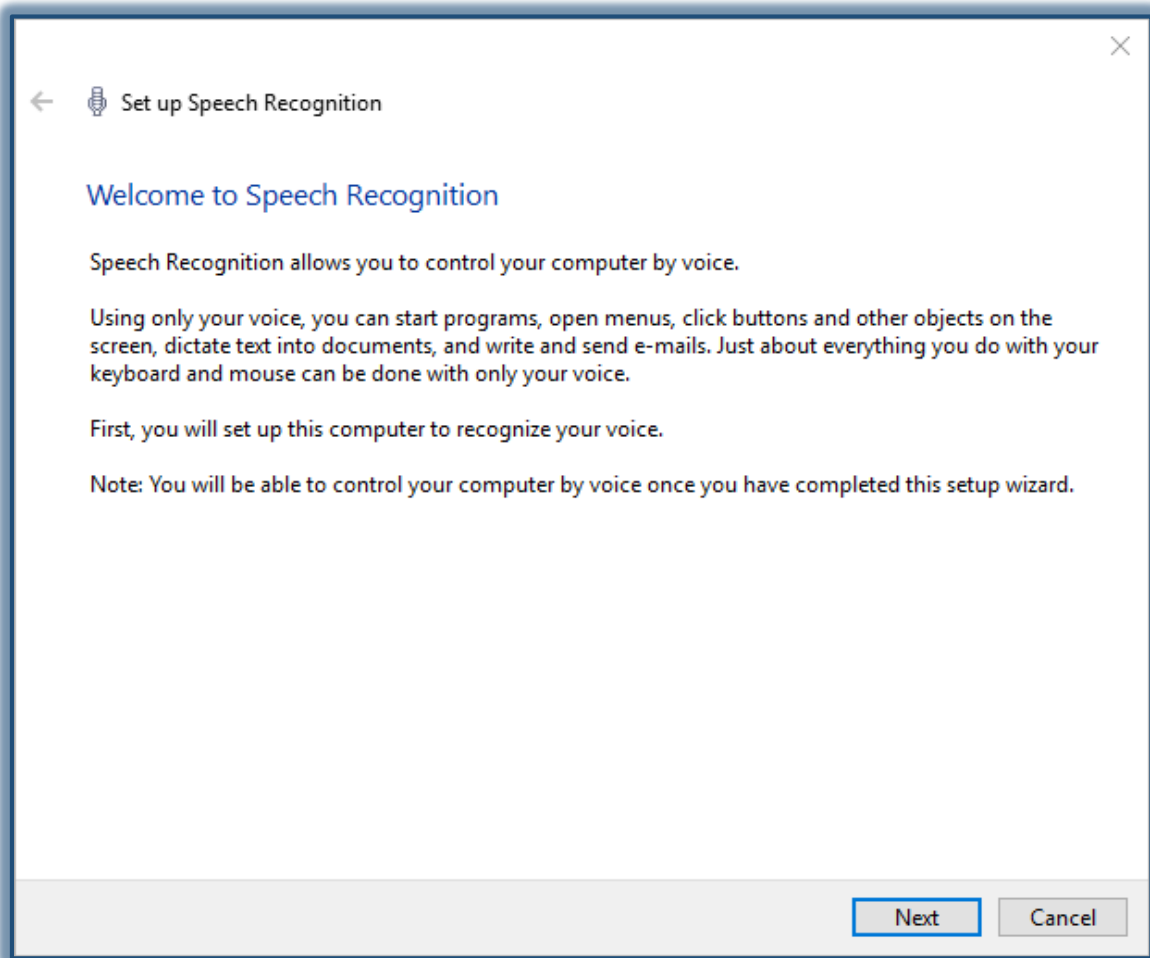
Voice recognition can be used to control the computer. Commands can be spoken that the computer will respond to. It is also possible to dictate text to the computer. Before Speech Recognition can be started, the computer needs to be setup. There are three important steps that need to be done before Speech Recognition can be used. These are to set up the microphone, learn how to talk to the computer, and to train the computer to understand the speech.

START SPEECH RECOGNITION

- ✦ In the **Search** box, input **Speech Recognition**.



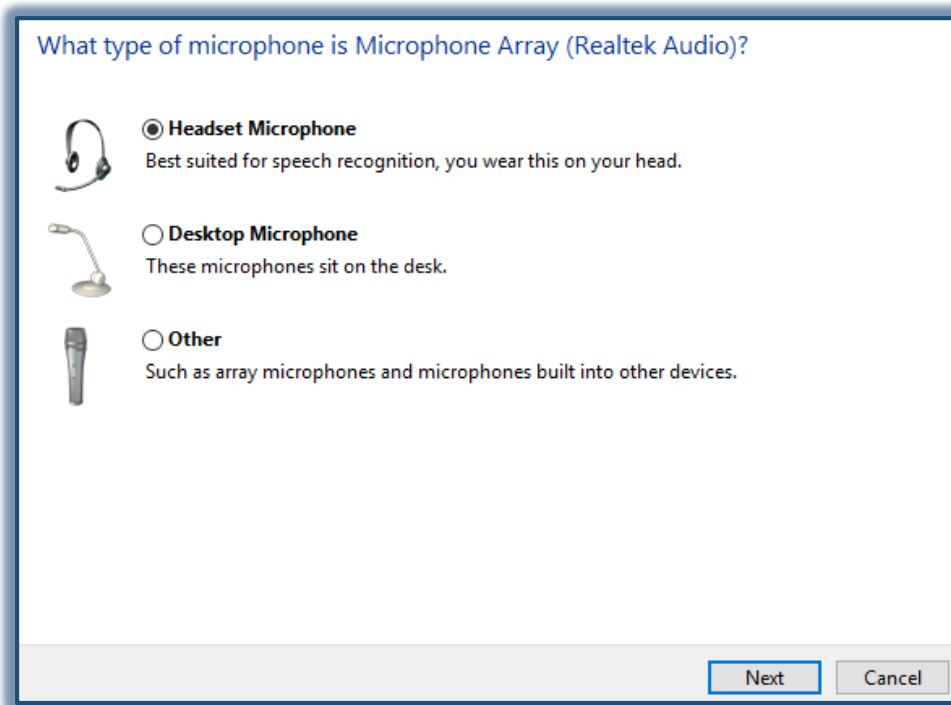
- ✦ Click **Windows Speech Recognition** at the top of the list that appears.
- ✦ The **Speech Recognition** window will display.



- ✦ Read the information and then click **Next**.

SELECT THE TYPE OF MICROPHONE

- ✦ In the **Speech Recognition Window**, click the **Set up Microphone** link.
- ✦ Select the type of microphone that will be used.
- ✦ Click the **Next** button.



NOTE: It is important to use the proper type of microphone for Speech Recognition. The two most common types are Headset Microphones and Desktop Microphones. According to the documentation, Headset Microphones are the best option for this task. This is because they are less prone to picking up extraneous sounds.

SET UP THE MICROPHONE

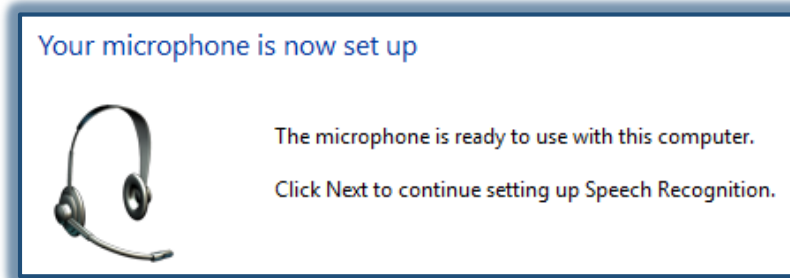
✚ Read the instructions on how to setup the microphone.



✚ Click the **Next** button.

ADJUST THE VOLUME OF MICROPHONE.

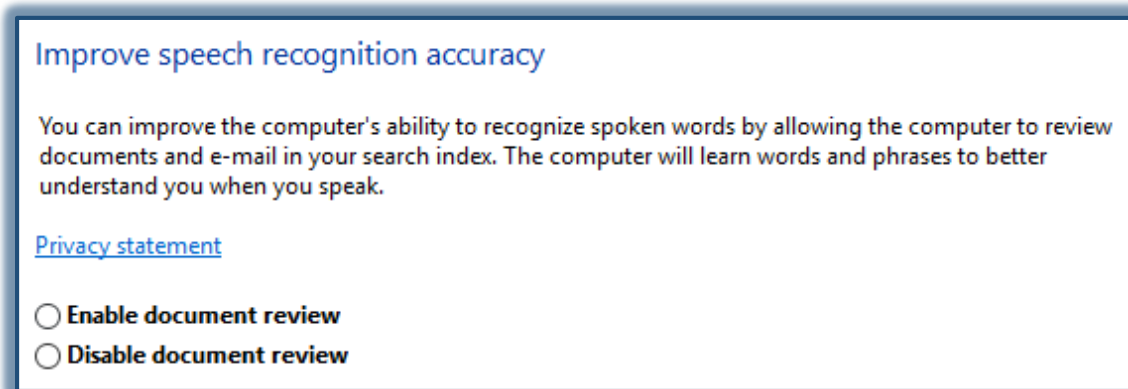
- ✦ Speak the sentence in the Wizard to test the volume of the microphone.
- ✦ Click the **Next** button.
- ✦ If your microphone is setup properly, the message below will appear.



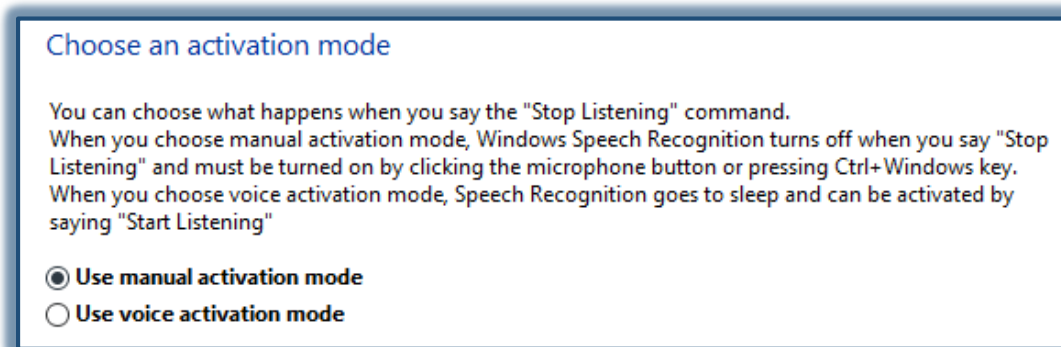
- ✦ Click **Next**.

OTHER OPTIONS

- ✦ The **Improve Speech Recognition Accuracy** window will display.



- ✦ Read the explanation in this window.
- ✦ Select one of the options in this window.
- ✦ Click **Next**.
- ✦ The **Choose an Activation Mode** window will display.



- ✦ Read the explanation in this window.
- ✦ Select one of the options.
- ✦ Click **Next**.
- ✦ The **Print the Speech Reference Card** window will display.
- ✦ Read the explanation in this window.

Print the Speech Reference Card



The Speech Reference Card is a list of commands the computer can respond to.

Print out the list and keep it with you for a quick reference to the commands you can use with the computer. When you encounter a program or some other part of the computer that's difficult to control by voice, this list of commands can be very useful.

[View Reference Sheet](#)

- ✦ Click **Next**.
- ✦ Select whether or not you want to run Speech Recognition every time you start the computer.

Run Speech Recognition every time I start the computer

Run Speech Recognition at startup

✦

LEARN HOW TO TALK TO THE COMPUTER

This step includes a tutorial that helps teach the commands used with Speech Recognition. This tutorial should take approximately 30 minutes to complete. To run the Speech Recognition Tutorial, follow the steps below.

- ✦ In the **Speech Recognition Window**, click the **Start Tutorial** button.

You can now control this computer by voice.

We strongly recommend that you take the interactive speech recognition tutorial. You will learn and practice the commands that will let you successfully control your computer by voice.

Click Start Tutorial to begin taking the tutorial.

[Start Tutorial](#)

[Skip Tutorial](#)

- ✦ Follow the instructions in the Wizard.