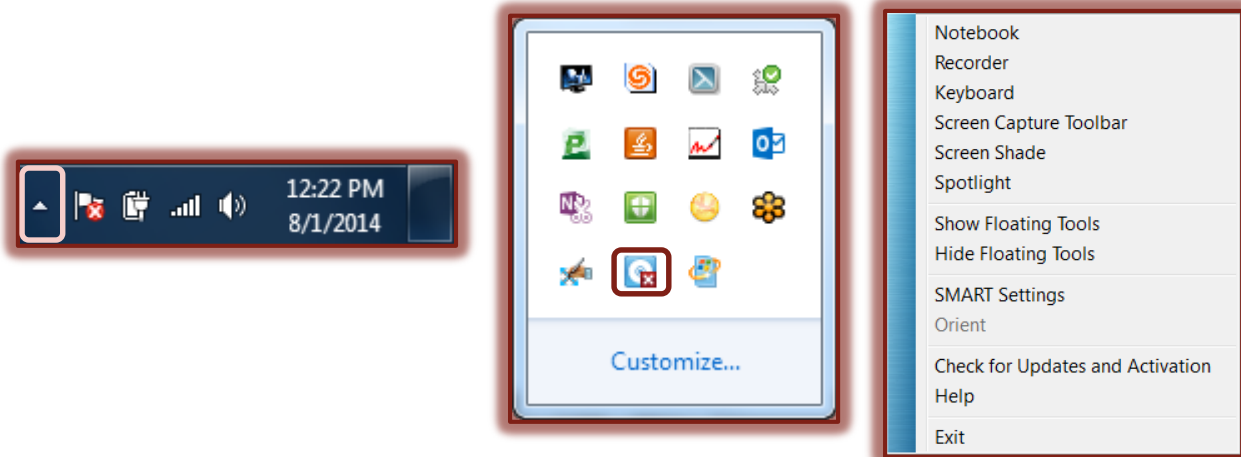


CHANGE PEN AND BUTTON SETTINGS

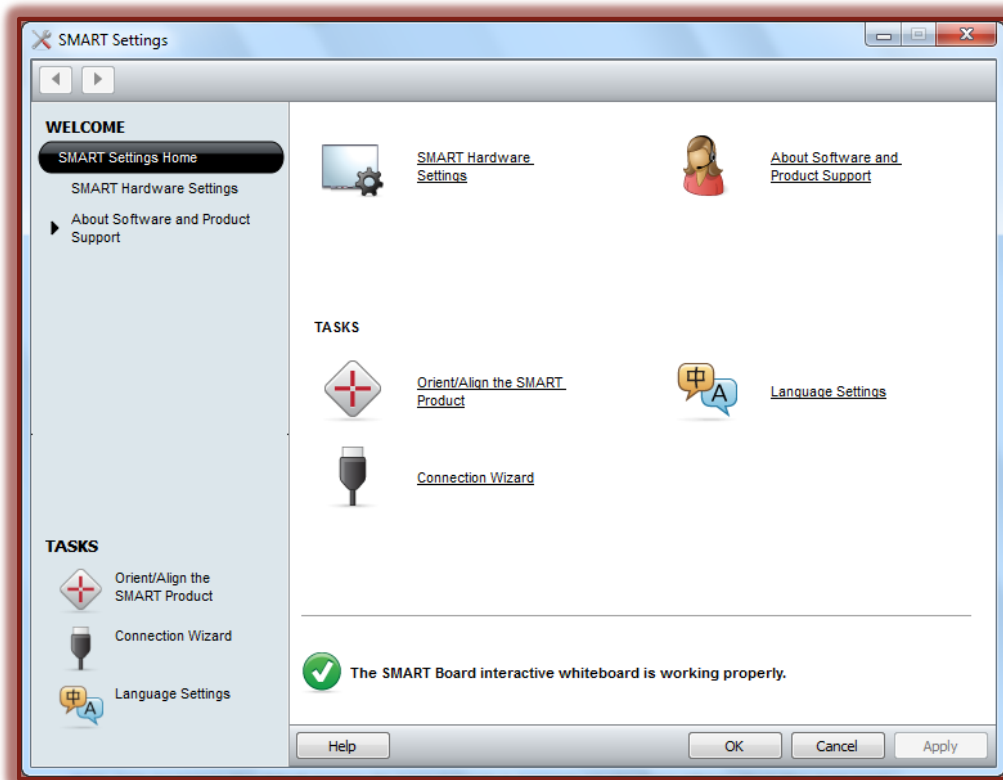
When working with the pens on the SMART Board, it is possible to change the line color, width, ends, thickness, and transparency for each pen. If the transparency is increased, the pen acts like a highlighter.

CHANGE PEN SETTINGS

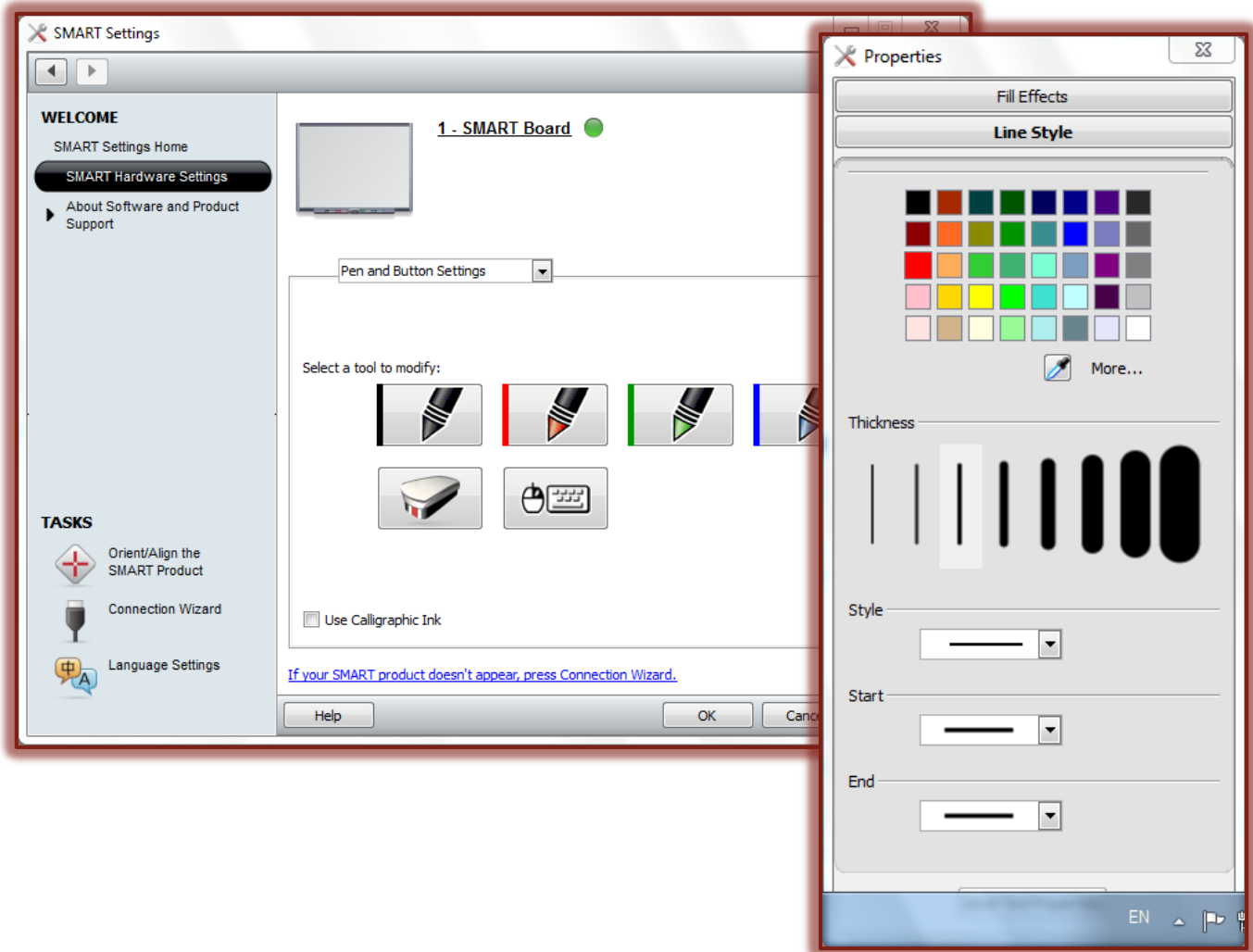
- ✦ To access the **SMART Settings** window:
 - ✦ Click the **Show Hidden Icons** button in the bottom right corner of the computer screen (see illustration below).
 - ✦ Click the **SMART Board** icon in the menu that displays (see illustration below).



- ✦ From the list that appears (see illustration above), select **SMART Settings**.
- ✦ The **SMART Settings** window will display (see illustration below).



- ✦ Click or press the **SMART Hardware Settings** link.
- ✦ The **SMART Hardware Settings** window will display (see illustration below).

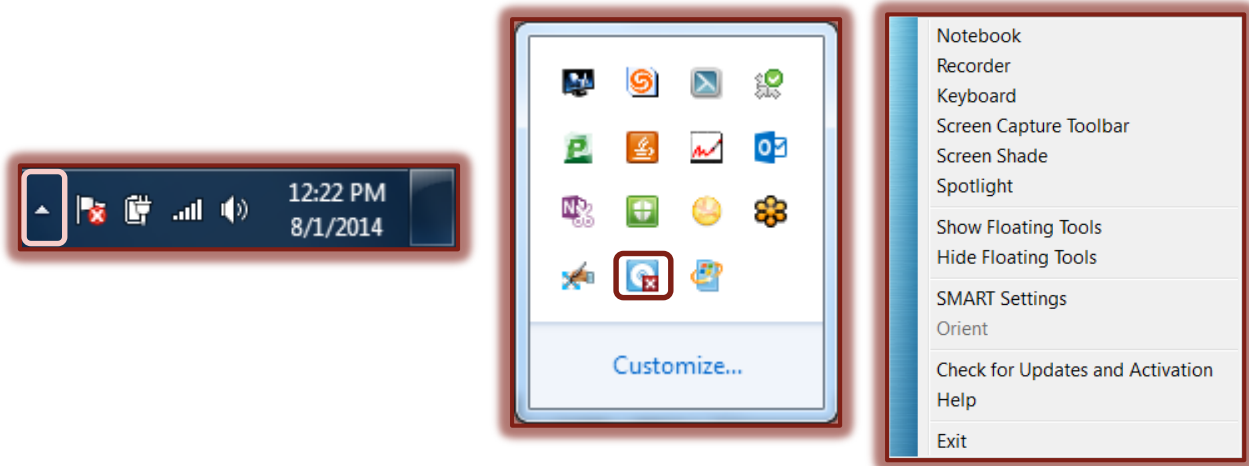


- ✦ Press or click one of the **Pen Settings** buttons to customize the pen.
- ✦ The **Properties** pane will display (see illustration above).
- ✦ In the **Line Style Gallery** select a color for the selected pen.
- ✦ Click or press the **More** button to access additional colors.
- ✦ In the **Thickness** section, select a different thickness for the pen.
- ✦ Click or press the **Style** arrow to select a different style for the line that the pen will draw.
- ✦ Click or press the **Start** arrow to select from a gallery of starting styles that the pen will draw.
- ✦ Select the style that the pen will use at the end of the line that is drawn with the pen.
- ✦ Click or press the **Save Tool Properties** button to save the changes.
- ✦ Press or click the **Fill Effects** tab to change the **Transparency** of the line drawn with the pen.
- ✦ Press or click the **OK** button to close the **SMART Settings** window.

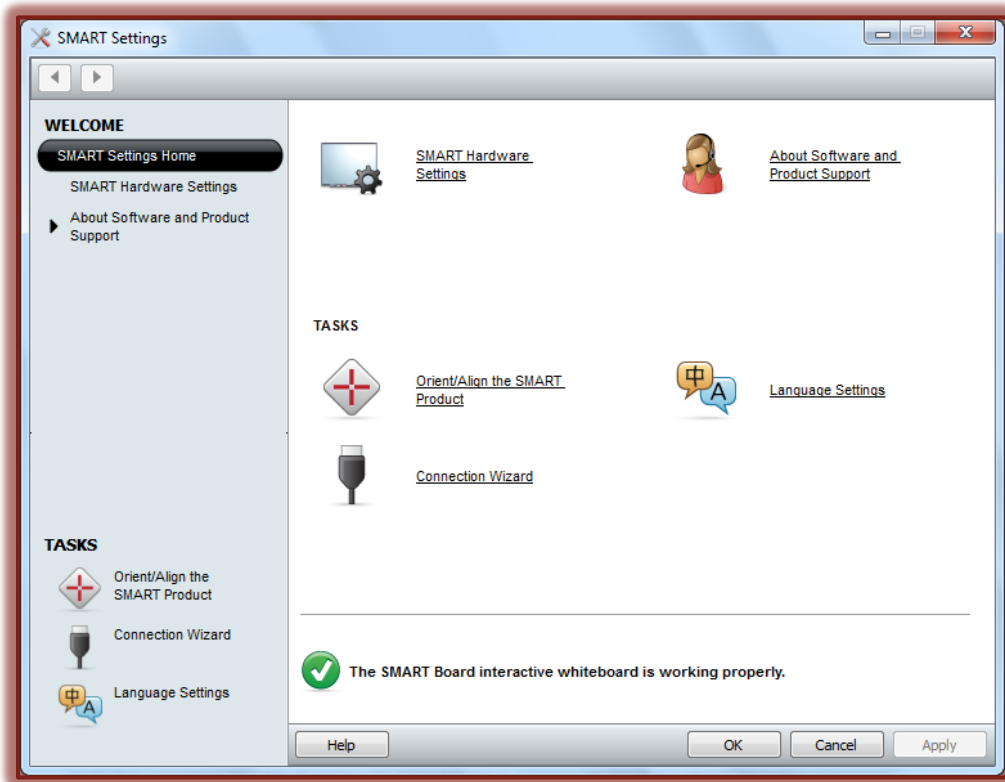
NOTE: It is also possible to change button, eraser, mouse, and keyboard settings using the **Control Panel**.

CHANGE BUTTON SETTINGS

- ✦ To access the **SMART Settings** window:
 - ✦ Click the **Show Hidden Icons** button in the bottom right corner of the computer screen (see illustration below).
 - ✦ Click the **SMART Board** icon in the menu that displays (see illustration below).



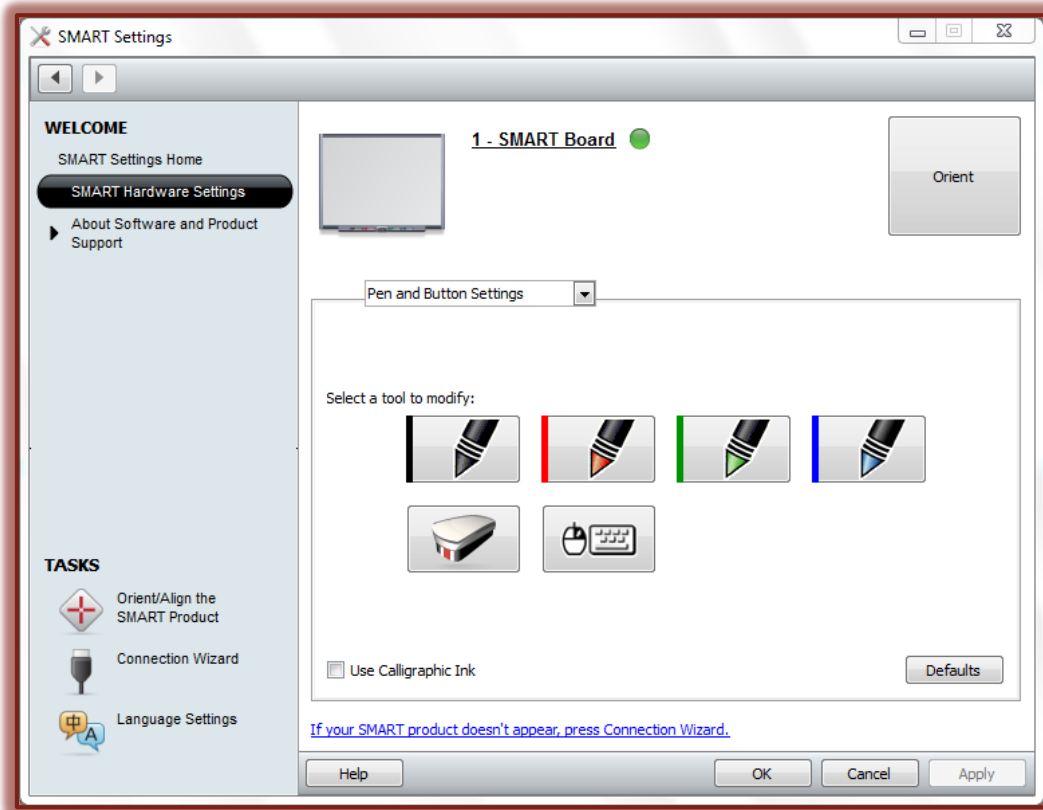
- ✦ From the list that appears (see illustration above), select **SMART Settings**.
- ✦ The **SMART Settings** window will display (see illustration below).



- ✦ Click or press the **SMART Hardware Settings** link.
- ✦ The **SMART Hardware Settings** window will display (see illustration on next page).

CHANGE ERASER SETTINGS

- ✦ Select **Pen and Button Settings** in the list, if necessary.
- ✦ To change the thickness of the **Eraser**:
 - ✦ Press the **Eraser** icon.



- ✦ The **Eraser Thickness Settings** window will display (see illustration below).



- ✦ Select a thickness for the **Eraser**.
- ✦ Press or click **OK** to save the settings.

CHANGE KEYBOARD AND MOUSE SETTINGS

- ✦ To change the **Keyboard** and/or **Mouse Settings**:
 - ✦ Click the **Mouse/Keyboard** button in the **SMART Settings** window.
 - ✦ The **Button Actions** window will display (see illustration on next page).
 - ✦ Click the **Keyboard** list arrow to select from a list of available options.
 - ✦ Click the **Mouse** list arrow to select from a list of available options for the mouse.
 - ✦ When all the changes have been made, press the **OK** button.

✚ Press **OK** to close the **SMART Settings** window.

