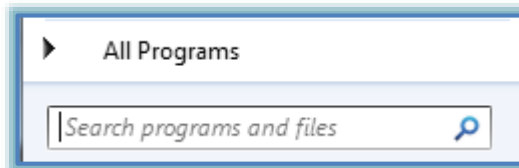


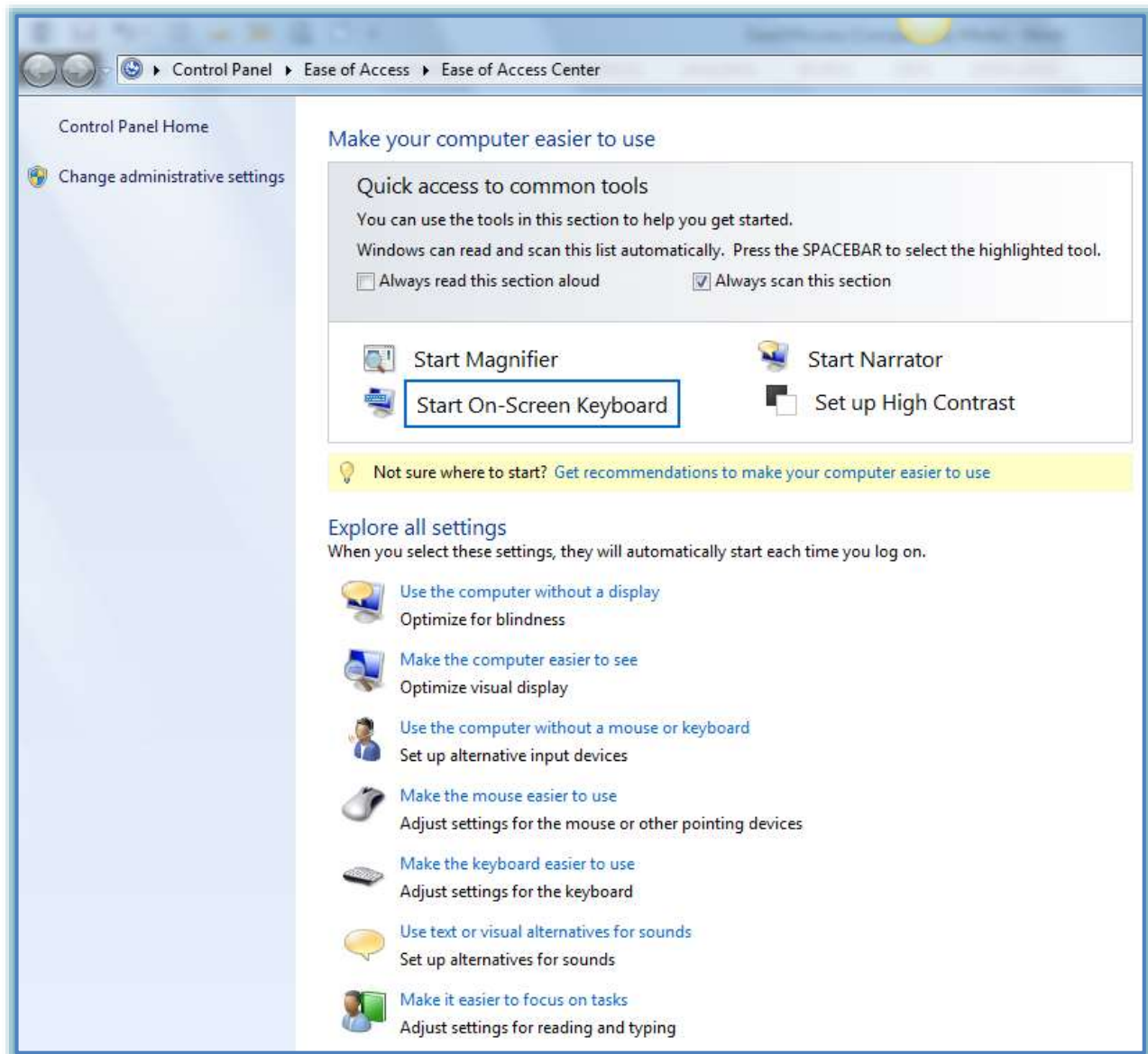
Ease of Access

This area is used to set up the Windows program for use by people with special needs.

- ✦ Click the **Start** button.
- ✦ In the **Search** box, input **Ease of Access**.



- ✦ Click the **Ease of Access** link.
- ✦ The **Ease of Access Center** window will display (see illustration below).



- ✦ Try out some of the options available in this window such as Magnifier, On Screen Keyboard, Narrator, and High Contrast.
- ✦ Scroll down the page to view additional options for people with special needs.