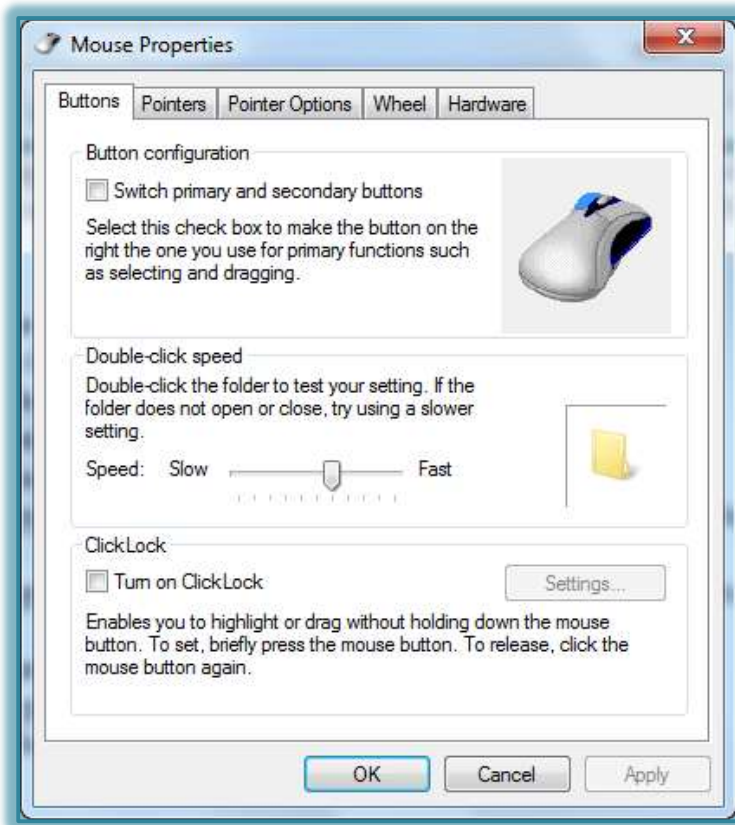


Modify Mouse Settings

It is possible to customize the computer mouse in a variety of ways. For instance, you can swap the functions of your mouse buttons, make the mouse pointer more visible, and alter the scroll speed of the mouse wheel.

- ✦ Click the **Start** button.
- ✦ In the **Search** box, input **mouse**.
- ✦ Click the link for **Mouse** in the left pane of the **Start Menu**.
- ✦ The **Mouse Properties** dialog box should display (see illustration below).



- ✦ Select the option to change from the list below:
 - ✦ **Buttons** - Use this tab to change what happens when a button is clicked.
 - ✦ **Pointers** - To change the appearance of the pointers that are used for different tasks, use this tab.
 - ✦ **Pointer Options** - To change the speed and other options of the mouse pointers, use this tab.
 - ✦ **Wheel** - Use this tab to change how the mouse acts when the wheel is used.
 - ✦ **Hardware** - To change the properties of the installed mouse, use this tab.
- ✦ When all the desired changes have been made, click **OK**.