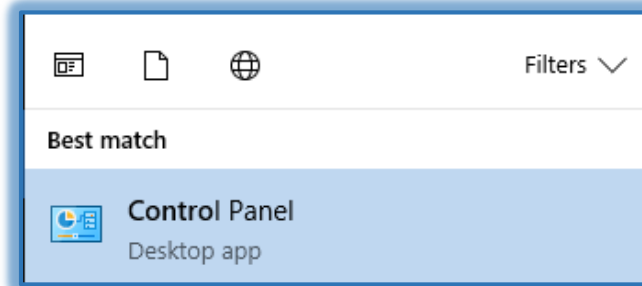


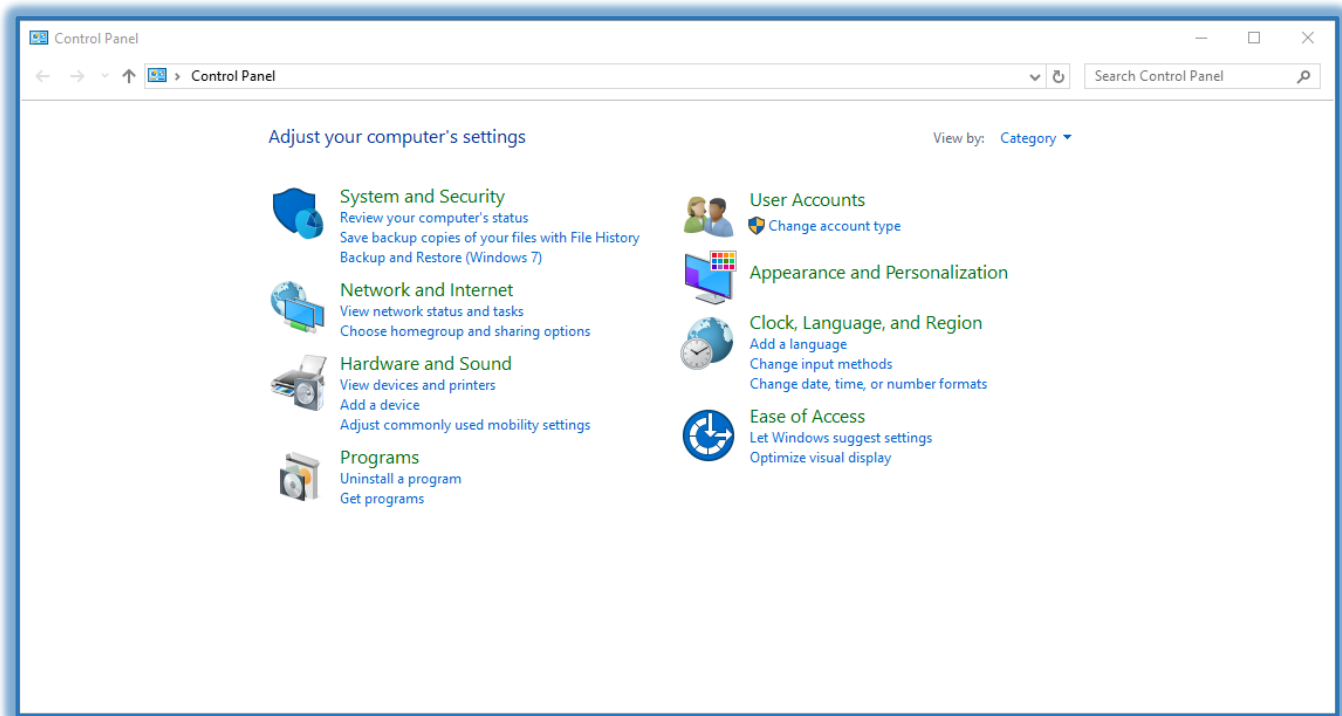
## Control Panel-Start

This area is used to make changes as to how items appear on the **Taskbar** or the **Start Menu**.

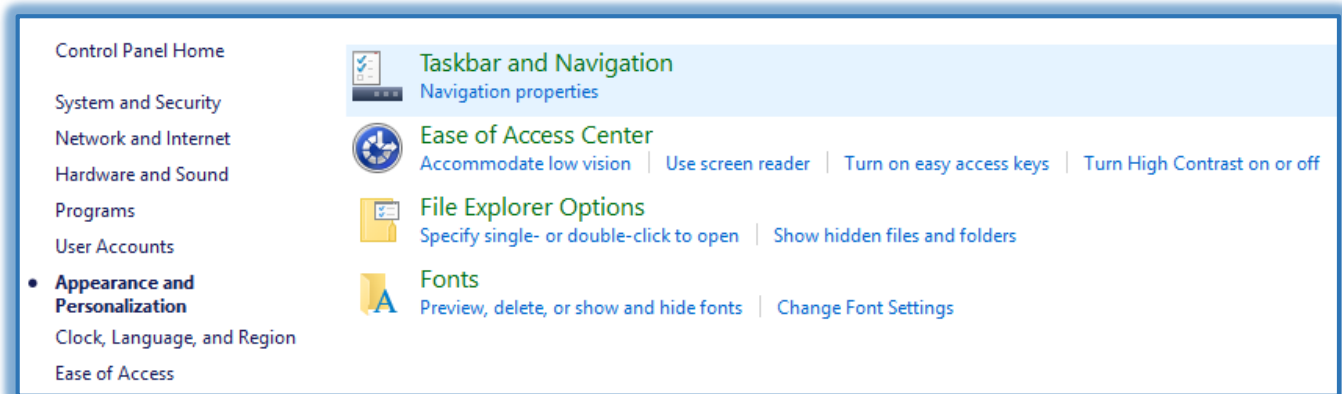
- + In the **Search** box to the right of the **Start Button** input **Control Panel**.
- + Click the **Control Panel** link at the top of the **Start Menu**.



- + The **Control Panel** window will display.



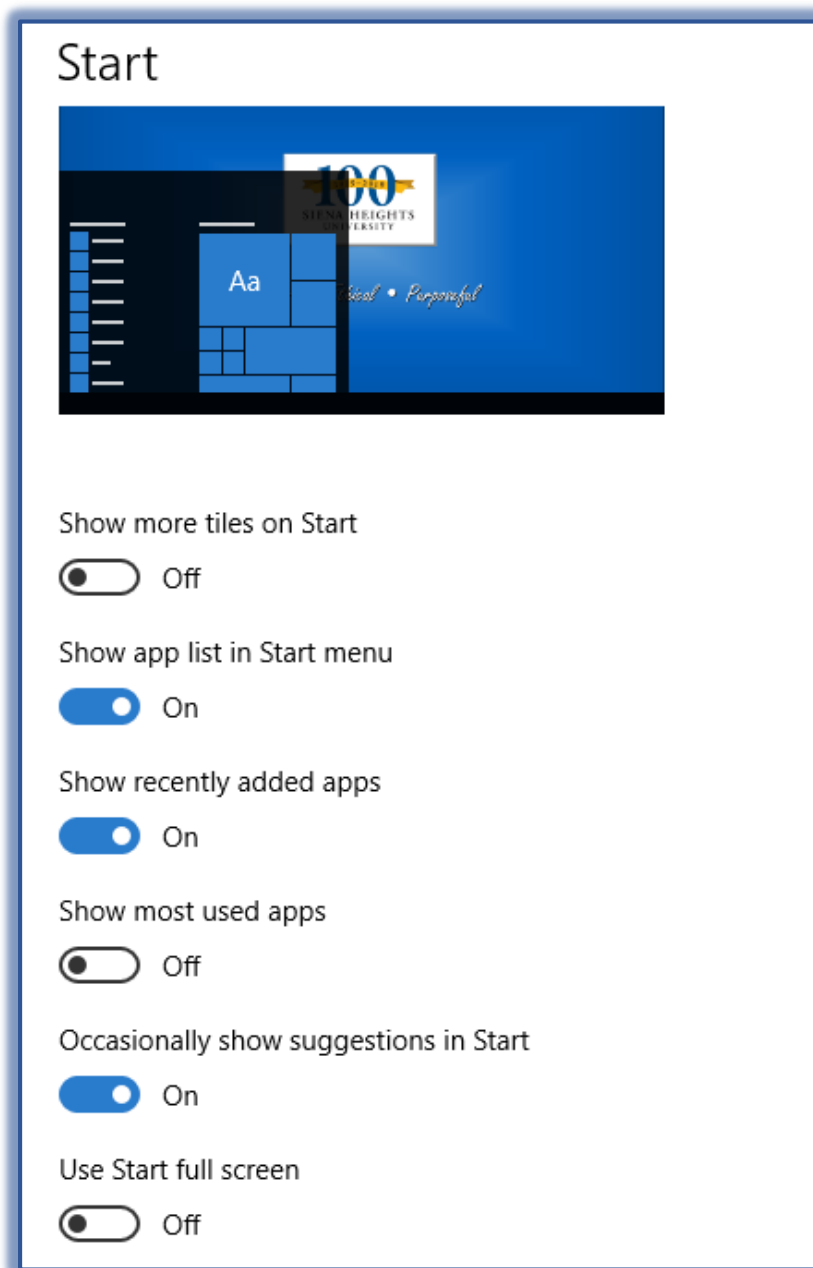
- + Click the **Appearance and Personalization** link.



- ✦ The **Appearance and Personalization** window will display.
- ✦ Click **Taskbar and Navigation**.
- ✦ The **Taskbar and Start Menu Properties** dialog box will display.

### Start

- ✦ The **Start** window will display.
- ✦ Select either **On** or **Off** for any of the following options.



- ✦ Show more tiles on Start
- ✦ Show app list in Start Menu
- ✦ Show recently added apps
- ✦ Show most used apps
- ✦ Occasionally show suggestions in Start

- ✦ Use Start full screen
- ✦ Show recently opened items in Jump Lists on Start or the Taskbar
- ✦ Click the **Show which folders appear on Start** link to select from a list of folders, such as File Explorer, Settings, or Documents.