

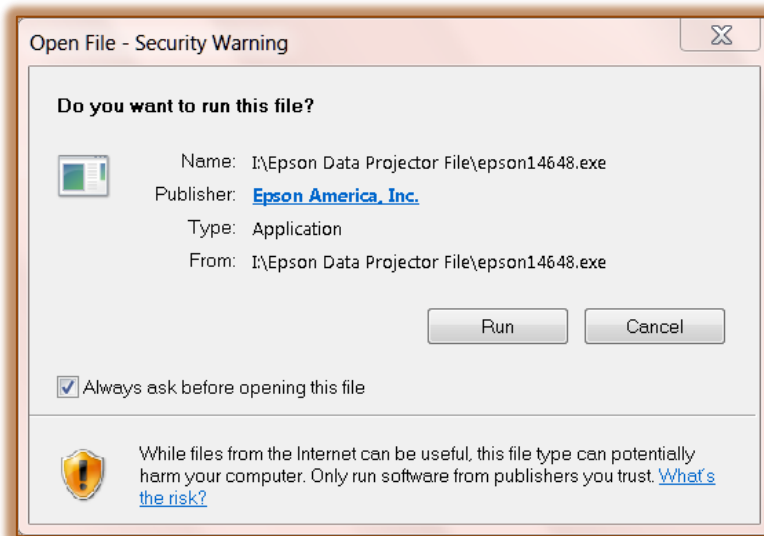
EPSON PROJECTOR WIRELESS INSTRUCTIONS

The classrooms that have EPSON data projectors are able to support a wireless connection from a WINDOWS laptop computer. This connection will work for PowerPoint or other non-streaming applications. Do not use it for showing videos or sites such as YouTube etc.

You will need to have a small application on your computer. The following instructions will guide you through the installation process and then show you how to connect. If you already have the software installed, go directly to the Open EasyMP Network section on the next page.

INSTALL PROJECTOR SOFTWARE

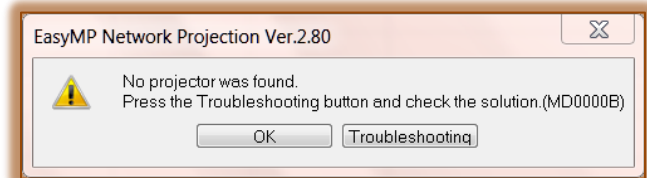
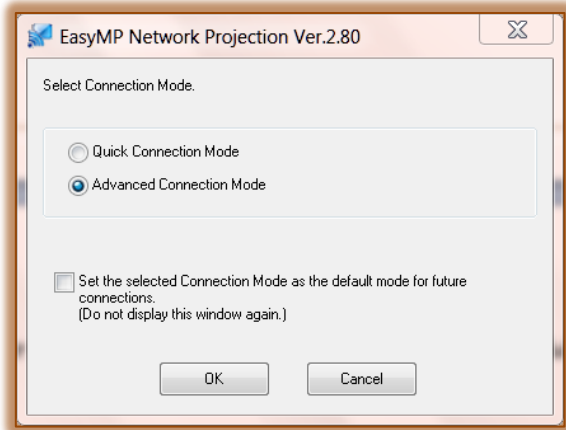
- 📁 Click the **Start** button on the **Taskbar**.
- 📁 Click **Computer** on the right side of the **Start Menu**.
- 📁 Select the **COMMONFILES** folder.
- 📁 Scroll down to locate the **Epson Data Projector File** folder.
- 📁 Double-click on the **Epson** folder.
- 📁 Double-click the **Epson14648** icon.
- 📁 The **Open File-Security Warning** window will display.



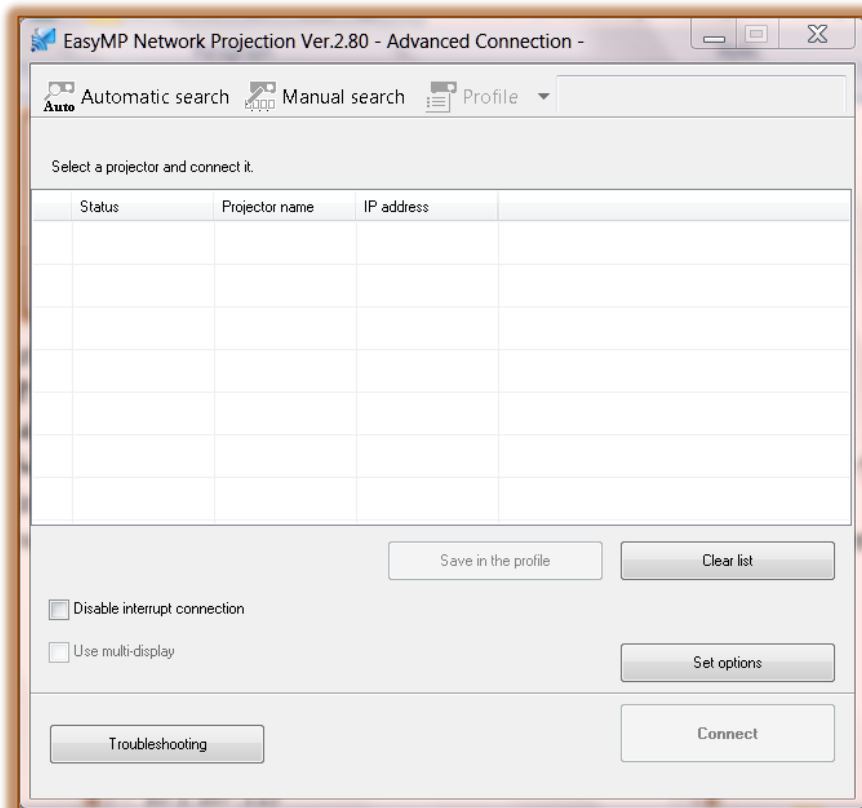
- 📁 Click the **Run** button.
- 📁 When the **WinZip Self Extractor** window displays, click **OK**.
- 📁 Another window will display, wait until the **Setup Language** window displays.
- 📁 English should be selected in this window. Click **Next**.
- 📁 Click **Next** in the **Welcome to Install Shield** window.
- 📁 Click **Yes** in the **License Agreement** window.
- 📁 Choose **Next** in the **Destination Location** window.
- 📁 The **Setup Status** window will display.
- 📁 Wait for the **Installation** to complete.
- 📁 The **Interactive Services Window** may display.
- 📁 Click **View the Message**.
- 📁 Click **Yes** and **Return Now**.
- 📁 Click **Finish**.

OPEN EASYMP NETWORK PROJECTION

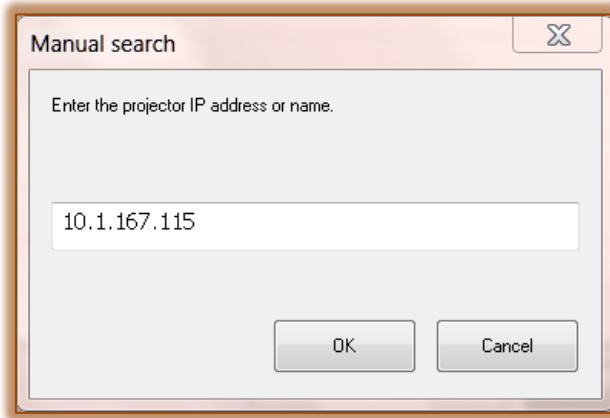
- 1. Click the **Start** button on the **Taskbar**.
- 2. Click **EasyMP Network Projection** in the list of programs.
 - ↳ If the program doesn't display in the list, input **EasyMP** into the **Search** box.
 - ↳ EasyMP Network Projection should appear at the top of the menu.
 - ↳ Click the link for the program.
- 3. In the **Connection Mode** window (see illustration below), select **Advanced Connection Mode**.



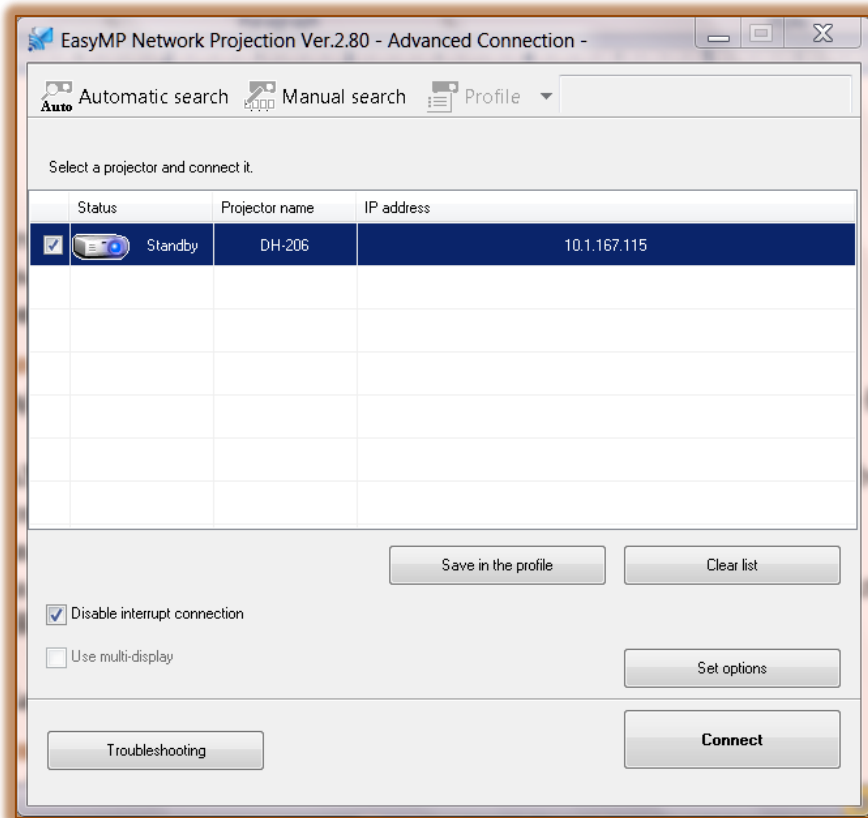
- 4. Click **OK**.
- 5. A message regarding the **Firewall** may display.
- 6. If that happens, click the **OK** button.
- 7. Another message will display stating, **No projector was found** (see illustration above right).
- 8. Click the **OK** button.
- 9. The **Advanced Connection** window will display.



- 📄 Click the **Manual Search** tab.
- 📄 In the **Manual Search** dialog box (see illustration below), input the **IP Address** that is posted at the **front of the room**.
 - 🔗 This is the nine digit number with 3 dots (see illustration below).
 - 🔗 You will have to complete this procedure for the projector in each room where you teach.



- 📄 Click **OK**.
- 📄 Click the checkbox next to the **Projector Name**.
- 📄 Click the **Disable Interrupt Connection** checkbox (see illustration below).



- 📄 Click the **Connect** button.

PROJECTOR REMOTE

- 📄 Press the **On/Off** button if the projector is not on. This is the **Red** button on the upper left side of the **Projector Remote**.

- ☞ Click the **LAN** button which appears on the right side of the second row of buttons.
- ☞ Right-click on the **Desktop** of your computer.
- ☞ Select **Screen Resolution** from the list of options.
- ☞ If you have a program open, please minimize the window to access the desktop.
- ☞ Change the **Resolution** to **800 x 600**.
- ☞ Click **OK**.
- ☞ In the **Display Settings** window, click **Keep Changes**.

TURN PROJECTOR OFF

- ☞ Press the **On/Off** button on the **Projector Remote**.
- ☞ Press the button a second time.
- ☞ The projector will turn off. (It will not restart until it completes a three (3) minute cool down cycle.)

PROJECTION TOOLBAR

The Projection Toolbar will show up, but in most cases the only option you need is the **Disconnect** button. To display just this button:

- ☞ Click the arrow on the far right side of the **Projection Toolbar**.
- ☞ Click the **Simple** option.
- ☞ All the buttons except the **Disconnect** button will be hidden.

DISCONNECT FROM EASYMP NETWORK PROJECTION

- ☞ When your session has ended, click the **Disconnect** button to close the **EasyMP Network Projection** program.