

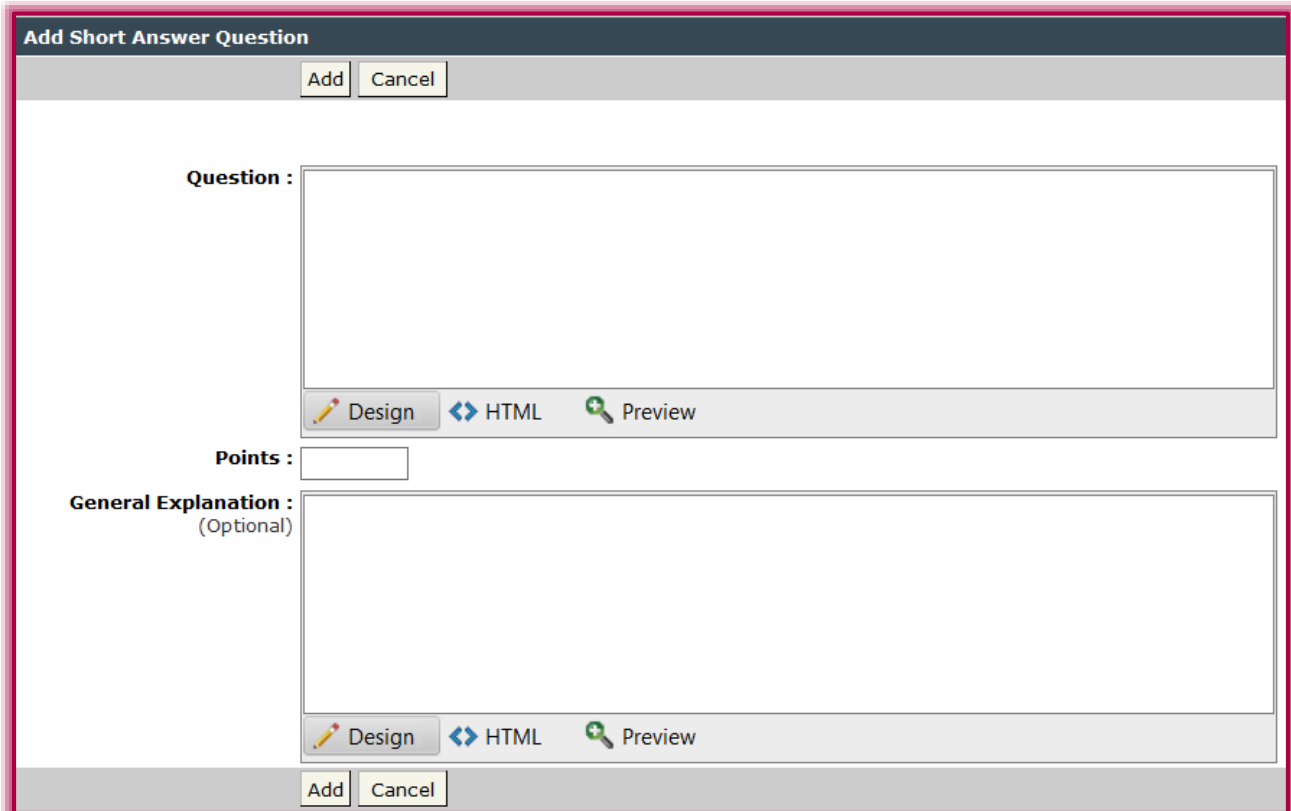
Exam-Short Answer Questions

This type of question is not auto-graded. It functions the same as an Essay question. The only difference is that this question provides less space for the answer.

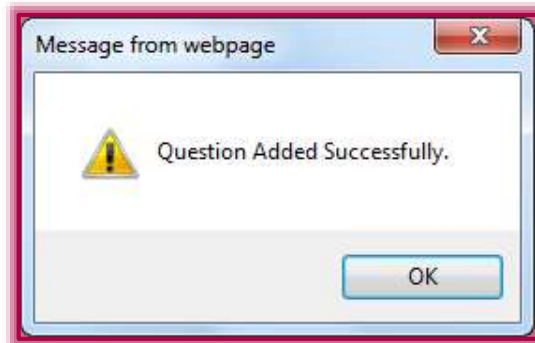
- Click the **Author** tab.
- Click the **Week** in the **Navigation Tree** where the quiz or test is located.
- Click the link for the Exam to which the question is to be added.
- The **Exam** window will display (see illustration below).



- In the **Add** list, select **New Short Answer Question**.
- Specify where the question is to appear in the quiz or test by inputting a number in the **As row** text box.
- Click the **Add** button on the right side of the window.
- The **Add Short Answer Question** window will display (see illustration below).

The screenshot shows a dialog box titled "Add Short Answer Question". It has "Add" and "Cancel" buttons at the top. The main area contains a large text box labeled "Question :". Below the text box are three buttons: "Design" (with a pencil icon), "HTML" (with a double arrow icon), and "Preview" (with a magnifying glass icon). Below these buttons is a "Points :" label followed by a small text input field. Underneath is a "General Explanation : (Optional)" label followed by a larger text area. At the bottom of the dialog, there are another set of "Design", "HTML", and "Preview" buttons, and finally "Add" and "Cancel" buttons.

- 🖨 In the **Question** box, input the text for the question.
- 🖨 Input the number of points that this question is worth in the **Points** box.
- 🖨 Input a **General Explanation** of the question, if desired.
- 🖨 Click the **Add** button to insert the question into the test or quiz.
- 🖨 A message will appear saying the question has been added successfully.



- 🖨 Click **OK** to return to the **Exam Content Item** window.

NOTE: In order for students to see the Explanation, the test or quiz needs to be made available in the Gradebook.