

## ADD WEB BROWSER CONTROL TO FORM

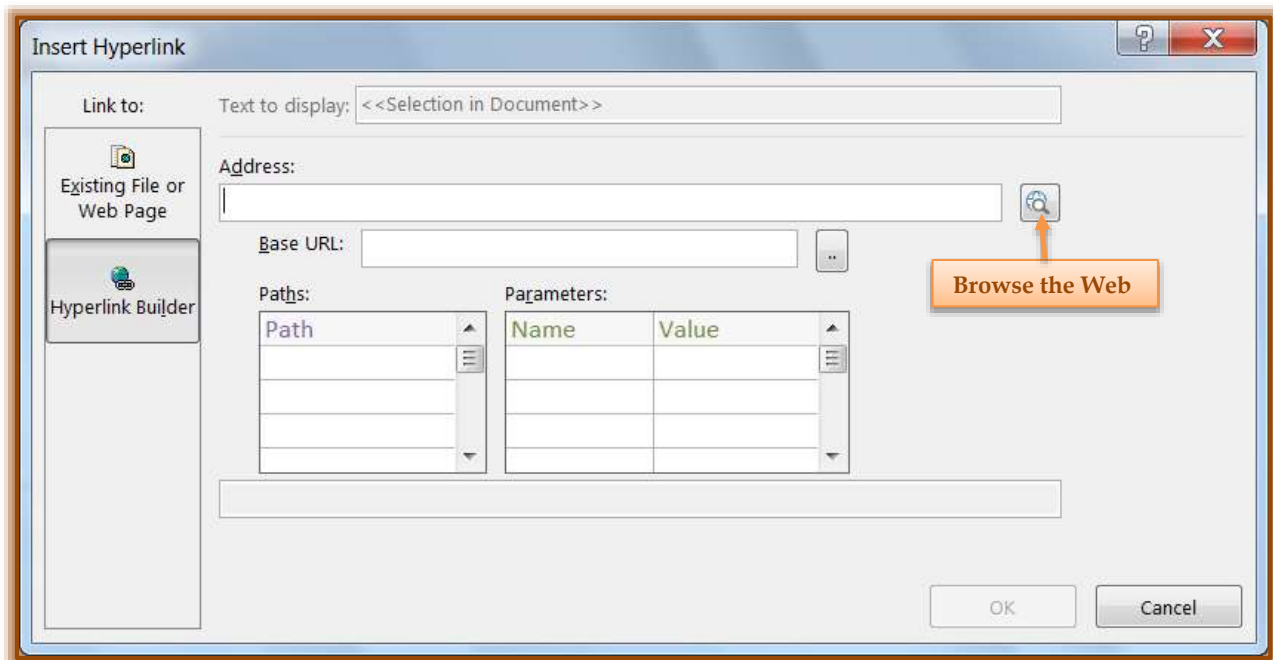
This control is used to display Web pages on a form. The control can be linked to fields or controls in the database to dynamically determine which page is displayed. Adding this control to a form is similar to the process of adding other controls such as text boxes or command buttons. The main difference is in how the control is created. Instead of an expression or object name, the control source is a Web page URL (Address).

### Control Doesn't Change Based on Data in Field

- ✦ Open the **Form** where the control is to be added in **Layout View**.
- ✦ Click the **Design Tab**.
- ✦ In the **Controls Group**, click the **Web Browser Control** (see illustration below).



- ✦ Position the pointer where the control is to be inserted.
- ✦ Click to place the control in the form.
- ✦ The **Insert Hyperlink** dialog box will display (see illustration below).



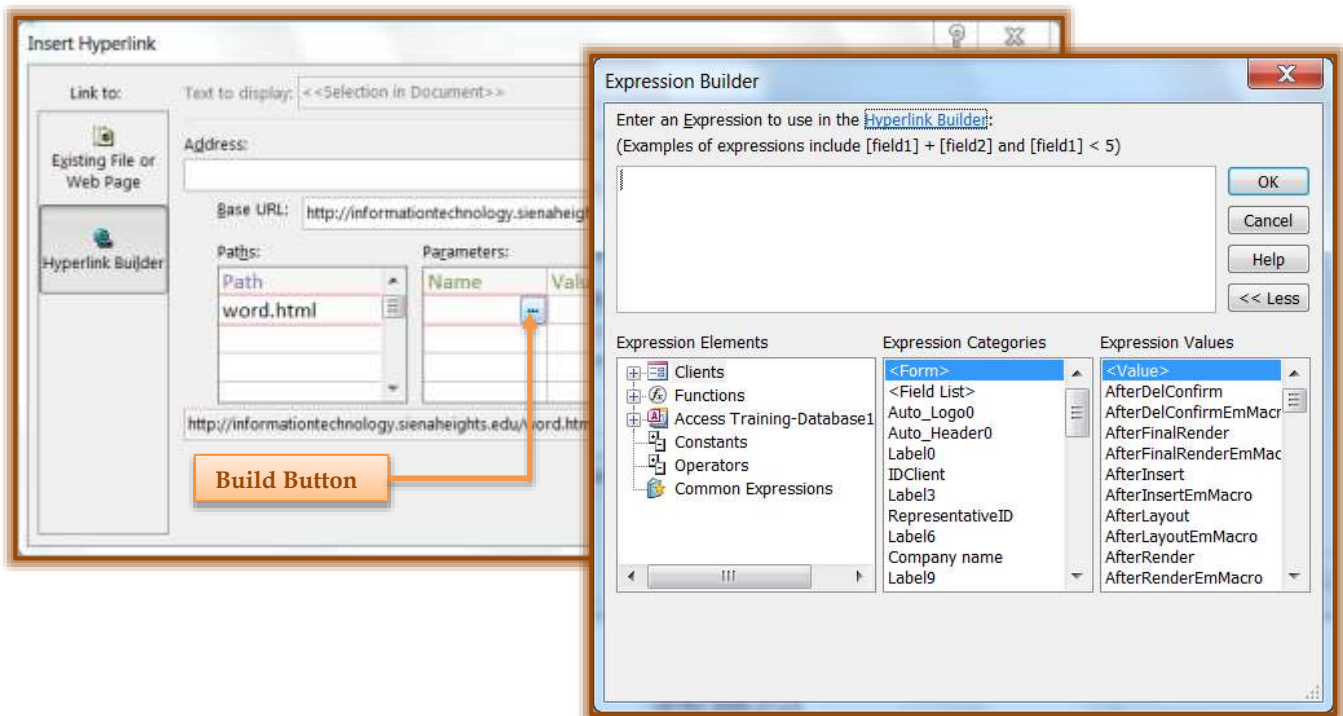
- ✦ Click the **Browse the Web** button to the right of the **Address** box (see illustration above).
  - ✦ The **URL (Address)** can be typed directly into the box.
  - ✦ However, the easiest way is to browse to the site and copy the address.
- ✦ **Navigate** to the page that is to be displayed in the control.
- ✦ **Copy** the **URL** from the **Address Bar**.
- ✦ **Close** the **Browser**.
- ✦ In the **Insert Hyperlink** dialog box, paste the **URL (Address)** into the **Address** box.
- ✦ Press the **Tab** key.

- ✦ The **Address** box will be cleared.
- ✦ The address will be separated into the appropriate boxes (**Base URL**, **Paths**, **Parameters**).
- ✦ The complete **URL** will be displayed in the box directly below the **Paths** and **Parameters** lists.
- ✦ To display the **Web** page regardless of the information displayed, click **OK**.

### Control Changes Based on Data in Field

To set the Web Browser Control so that the URL changes based on the data displayed on the form, the appropriate URL (Address) components must be replaced. These components must refer to the appropriate controls on the form. These steps must be followed for each component that is to be replaced.

- ✦ Complete the steps in the previous section to create the **Control**.
- ✦ Click the path or parameter that is to be changed.
- ✦ Click the **Build** button under the **Parameter** area (see illustration below).



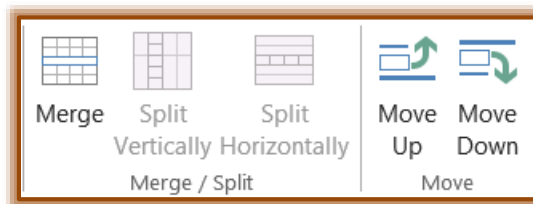
- ✦ The **Expression Builder** dialog box will display (see illustration above).
- ✦ In the **Expression Elements** List, click the plus sign (+) next to the **Database** name to view the list of tables and queries.
- ✦ Select the table, report, or query to display a list of controls.
- ✦ In the **Expression Categories** list, double-click the control to add it to the **Expression Builder**.
- ✦ Click **OK**.

### Change Position and Size of Control

When this control is first placed in the form, it might occupy a small cell in a layout. In some cases, it may be necessary to adjust the layout to show as much of the Web page as possible. A good way to do this is to merge the cell that contains the Control with adjacent cells in the Form.

- ✦ Select the cell that contains the **Web Browser Control**.

- ✦ Hold down the **Ctrl** key.
- ✦ Select any empty cells that are adjacent to the control.
- ✦ Click the **Arrange Tab**.
- ✦ In the **Merge/Split Group**, click the **Merge** button.



- ✦ Resize the cell.
  - ✦ Select the cell.
  - ✦ Drag the edges of the cell until it is the desired size.

### Modify the Control Source of the Control

After this type of Control has been added to a form, it is possible to make modifications to the Control Source (URL).

- ✦ In the **Navigation Pane**, right-click the form that contains the Control that is to be modified.
- ✦ Select **Layout View** from the list of options.
- ✦ Right-click the **Web Browser Control**.
- ✦ Click **Build Hyperlink**.
- ✦ The **Insert Hyperlink** dialog box will display.
- ✦ Make the necessary changes to the URL components.
- ✦ Click **OK**.