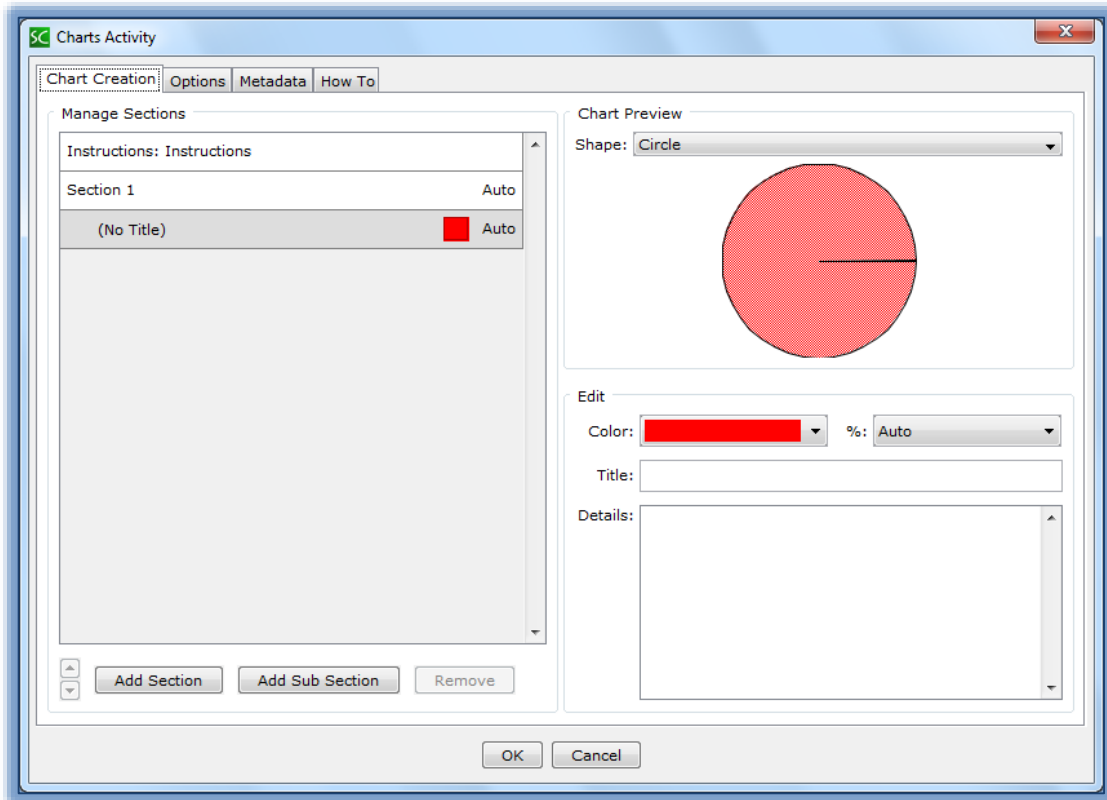


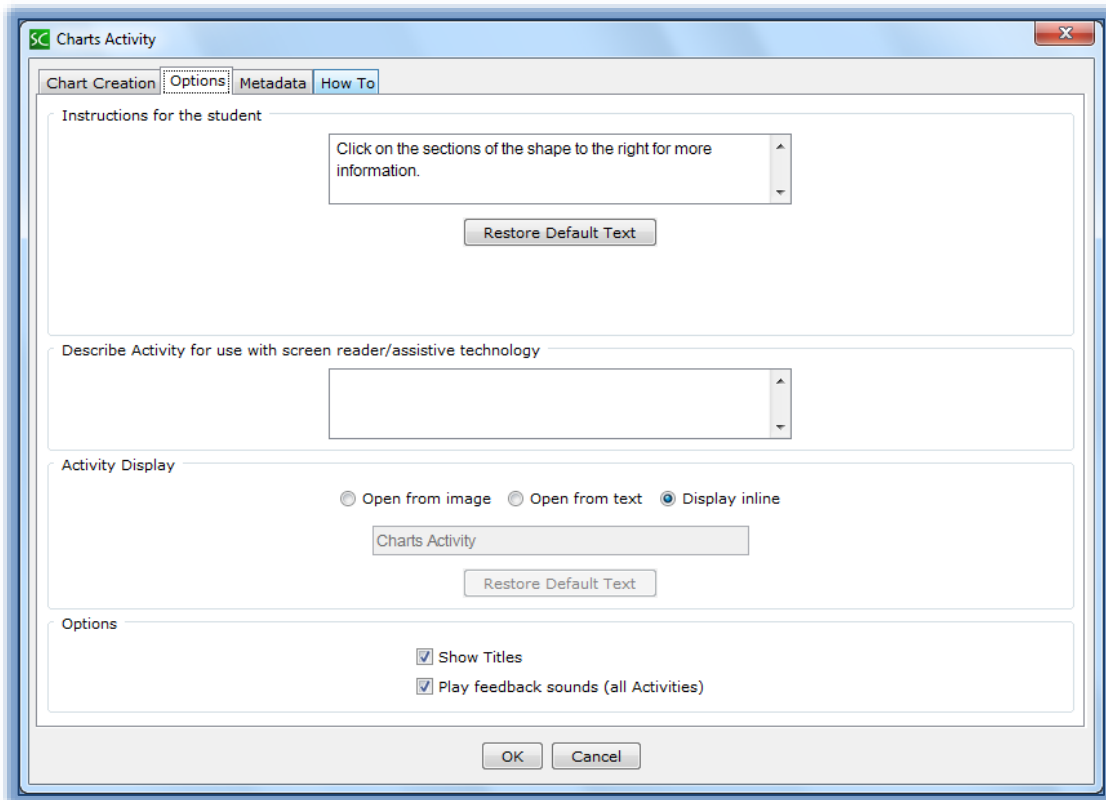
SoftChalk - Charts Activity-Circle

This Activity allows the instructor to create a circle chart. It is also possible to add subsections to the chart.

- Click the **Insert** tab on the **Menu Bar**.
- Move the mouse pointer over **Activity**.
- From the list that appears, click **Charts**.
- The **Charts Activity** window will display (see illustration below).



- In the **Shape** list, select **Circle**.
- Click the **Add Section** button to insert the number of sections needed for the Chart.
- Click **Section 1**.
- Select a **Percentage** for **Section 1**.
- Click the **No Title** area for **Section 1**.
- Input a **Title** for **Section 1**.
- Input a **Description** for this **Section** of the **Chart**.
- Select a **Color** for the section.
- DO NOT** select a **Percentage** at this time.
- Continue this process until the **Title**, **Color**, and **Description** is specified for each Section.
- Click the **Options Tab** (see illustration on next page) to input the **Instructions** for the **Activity**.
- Click the **Show Titles** option. This will allow the Titles to display in the Chart when it is viewed in the Web Browser.
- Click the **Display Inline** check box if the **Activity** is to display directly within the Lesson.



- 📄 When all the **Sections** have been added, click the **OK** button to return to the **Main Entry Window**.
- 📄 The **Chart** will display when it is viewed in the **Web Browser** as shown in the illustration below.
- 📄 In the **Web Browser**, click a **Section** of the **Chart** to view information about the **Section**.

