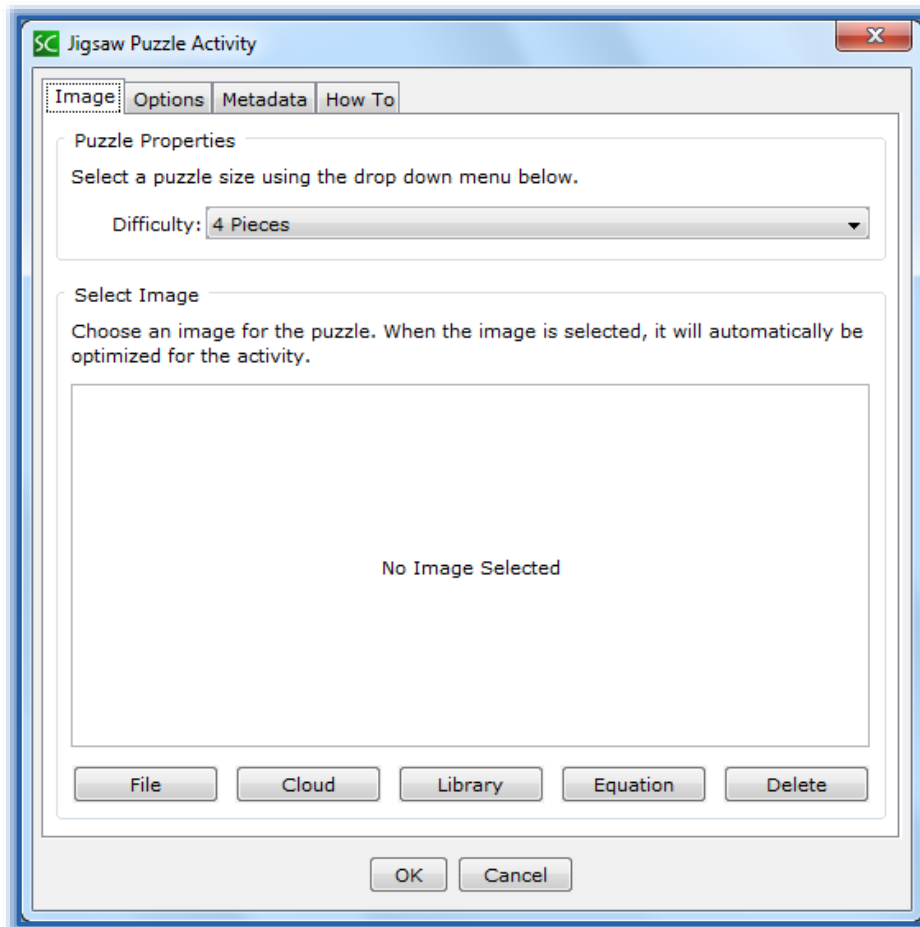


## SoftChalk – Jigsaw Puzzle Activity

This activity allows students to put a puzzle together. The instructor can select the number of pieces for the puzzle. The options are 4 to 100 pieces.

### INSERT IMAGE

- Click the **Insert Tab**.
- Move the mouse pointer over **Activity**.
- Select **Jigsaw Puzzle** from the list of activities.
- The **Jigsaw Puzzle Activity** window will display (see illustration below).

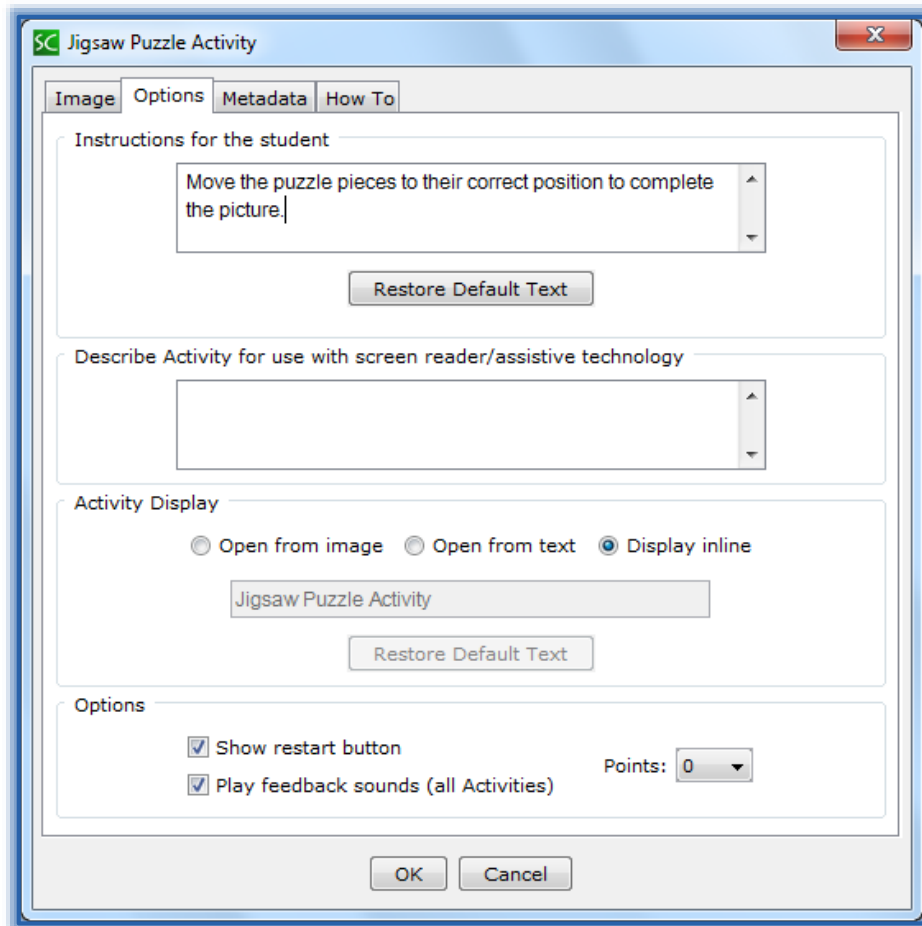


- To insert the image click the **File**, **Library**, or **Equation** buttons.
- Select the **Image** that is to be inserted.
- In the **Difficulty** list, select the number of pieces for the **Puzzle**. The options are from **4-100 Pieces**.
- Click **OK** to insert the **Activity** into the **Lesson**.
- The **Jigsaw Puzzle Activity Placeholder** will appear.

### OPTIONS

- Click the **Options** tab (see illustration on next page).
- Input instructions for the student into the appropriate box.
- Insert a description of the **Activity** for those students who are visually impaired.
- Click the **Show Restart Button** option. This will allow the students to restart the **Activity**.

- Click the **Display Inline** check box if the **Activity** is to display directly within the **Lesson**.
- Click the **Play Feedback Sounds** check box to allow the **Activity** to play a sound when **Feedback** is selected.



### EDIT HOTSPOT

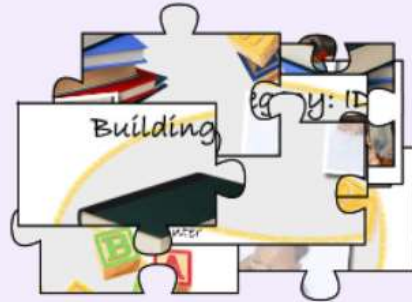
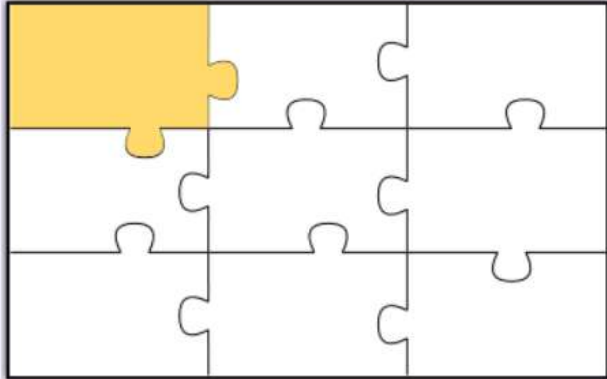
- Right-click on the **Jigsaw Puzzle Placeholder**.
- Select **Modify Activity** from the list.
- Make the necessary changes to the **Activity**
- Click the **OK** button.

### VIEW ACTIVITY IN BROWSER

- Save** the **Lesson**.
- Click the **View in Browser** button on the **SoftChalk Toolbar** (see illustration at right).
- The **Activity** will appear as shown in the illustration on the next page.
- Click the **Puzzle Piece** on the right side.
- Drag the **Puzzle Piece** into the correct location on the left side.
- Click the **Re-start** button to start over.
- Click the **Finish** button when you have finished the **Puzzle**.



 Move the puzzle pieces to their correct position to complete the picture.



Press SPACE to switch between parts, ENTER to release

Re-start

Finish