

SoftChalk - Pairs Activity

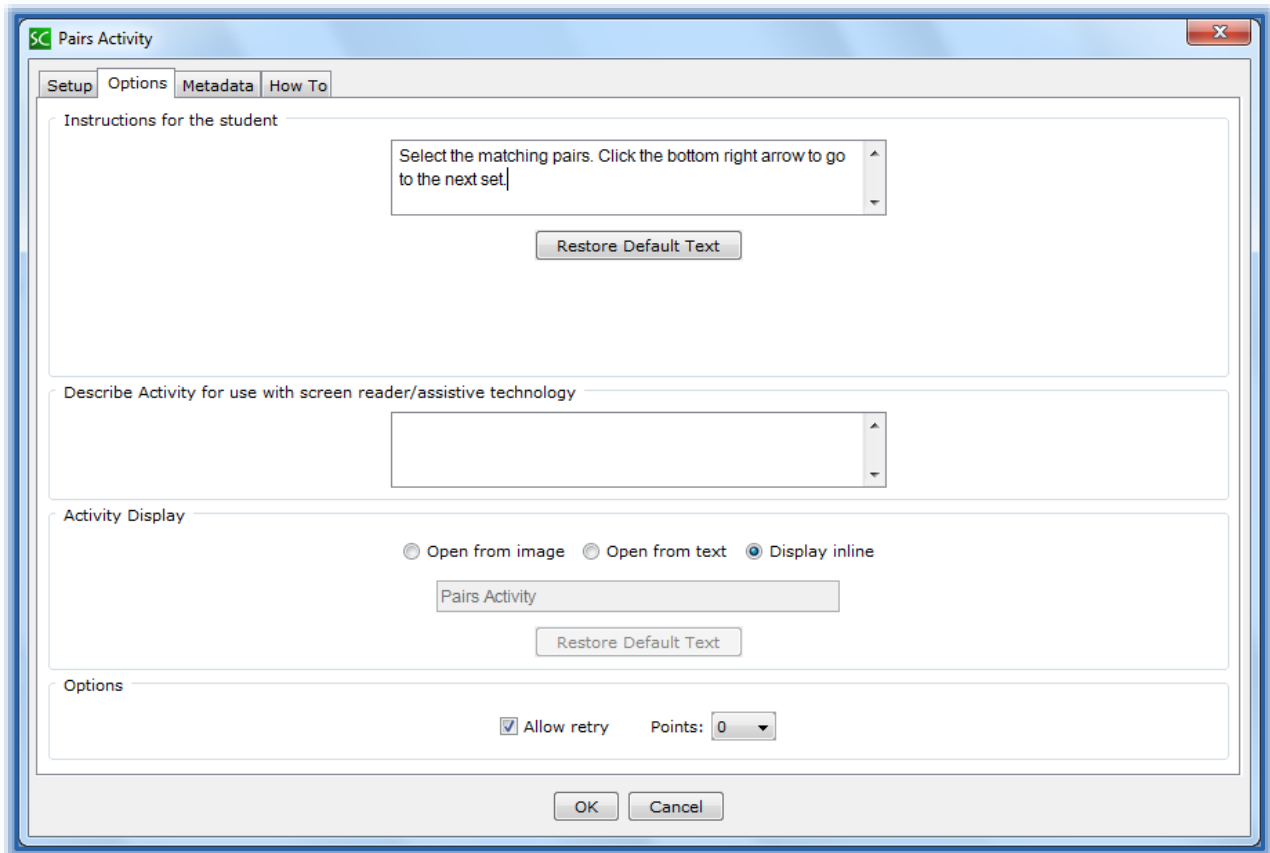
This Activity allows students to match items in pairs.

- Click the **Insert** tab on the **Menu Bar**.
- Move the mouse pointer over **Activity**.
- Select **Pairs Activity** from the list.
- The **Pairs Activity** window will display (see illustration below).

The screenshot shows the 'Pairs Activity' window with the following elements:

- Setup Tab:** Contains instructions and a numbered list: 1. Click **New**. 2. Enter your information. 3. Click **New** to create a new set.
- Sets:** A list area with a scroll bar and the text 'Maximum 25 Sets'. Below it are 'New', 'Duplicate', and 'Delete' buttons.
- Title:** An input field for the activity title.
- Pairs (6 pairs maximum):** A section with six rows, each containing two input fields for defining pairs.
- Buttons:** 'OK' and 'Cancel' buttons at the bottom of the window.

- Under the **Setup Tab** click the **New** button at the bottom of the window to add the first set.
- Input a **Title** for the **Activity**.
- Input the **Items** for the **Activity**.
- Click the **New** button to create another set.
- Continue this process until all the sets for the **Activity** are completed. You can insert up to **25 Sets**.
- Click the **Options Tab** (see illustration on next page) to input the **Instructions** for the **Activity**.
- Click the **Allow Retry** check box if the students will be allowed to try the **Activity** more than once.
- Click the **Display Inline** check box if the **Activity** is to display directly within the Lesson.
- Click the **Example Tab** to view how this **Activity** works.
- When all the **Sets** have been added, click the **OK** button to return to the **Main Entry Window**.



When the Lesson is viewed in the Web Browser, the **Pairs Activity** will display as shown in the illustration below. Some of these activities may display in three columns.

