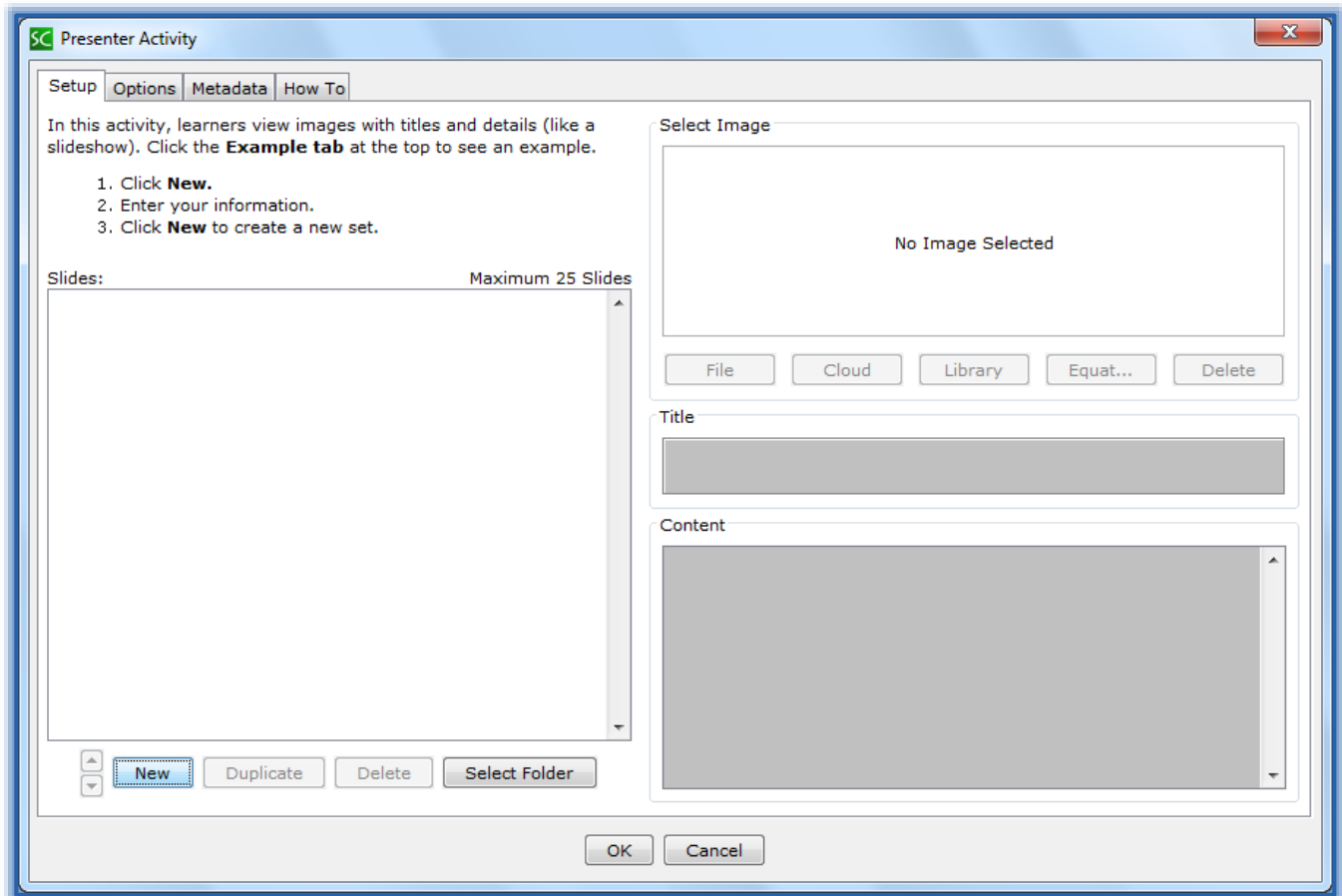


SoftChalk - Presenter Activity

This activity lets you present material in a mini slideshow format. Each new set is the equivalent of a new slide.

- Click the **Insert** tab on the **Menu Bar**.
- Move the mouse pointer over **Activity**.
- Select **Presenter** from the list.
- The **Presenter Activity** window will display (see illustration below).



- Under the **Setup Tab** click the **New** button at the bottom of the window to add the first slide.
- Select the **Image** for the **Slide**.
- There are four areas where images can be selected.
 - File - Select this option to select an image from the computer.
 - Cloud - This option is used to select an image from SoftChalk Cloud.
 - Library - Click this button to select an image from the **SoftChalk Library**
 - Equations - This feature allows the user to create an image from an equation.
- Input a **Title** for the **Activity**.
- Input the **Content** for **Slides** for the **Activity**.
- Click the **New** button to create another **Slide**.
- Continue this process until all the slides for the **Activity** are completed. You can insert up to **25 Slides**.

Click the **Options Tab** (see illustration below) to input the **Instructions** for the **Activity**.

The image shows a software window titled "Presenter Activity" with four tabs: "Setup", "Options", "Metadata", and "How To". The "Options" tab is selected. It contains several sections:

- Instructions for the student:** A text area containing the text "Click the bottom arrows to view the slides. Click the text icon to bring up more information." Below it is a "Restore Default Text" button.
- Describe Activity for use with screen reader/assistive technology:** An empty text area.
- Activity Display:** Three radio buttons: "Open from image", "Open from text", and "Display inline". The "Display inline" option is selected. Below the radio buttons is a text field containing "Presenter Activity" and another "Restore Default Text" button.
- Options:** An empty section.

At the bottom of the window are "OK" and "Cancel" buttons. A blue-bordered inset window shows a preview of the activity. It features the same instruction text at the top, a key icon, and the title "Abraham Lincoln" above a portrait of Lincoln. At the bottom of the preview, there is a "1/3" indicator, a set of three small squares, and navigation arrows.

- ☰ Click the **Display Inline** option button if the **Activity** is to display directly within the Lesson.
- ☰ Click the **How to Tab** to view how this **Activity** works.
- ☰ When all the **Slides** have been added, click the **OK** button to return to the **Main Entry Window**.
- ☰ The Activity will display as shown in the illustration on the previous page left.
- ☰ When the Lesson is viewed in the Web Browser, the **Presenter Activity** will display as shown in the illustration on the previous page right.