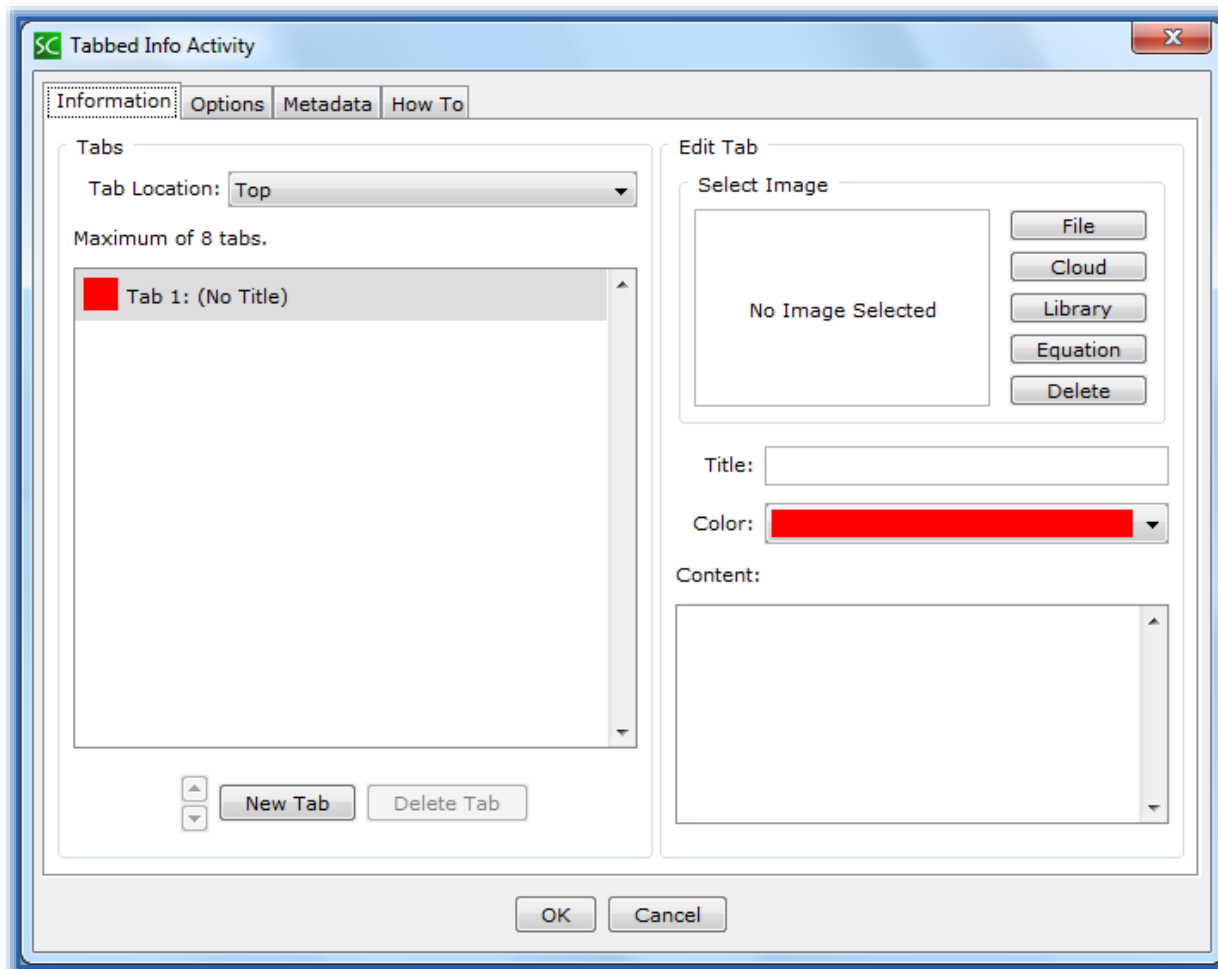


SoftChalk – Tabbed Info Activity

This Activity allows you to display information in a tabular format.

CREATE ACTIVITY

- Click the **Insert Tab**.
- Move the mouse pointer over **Activity**.
- Select **Tabbed Info** from the list of **Activities**.
- The **Tabbed Info Activity** window will display (see illustration below).



INFORMATION TAB

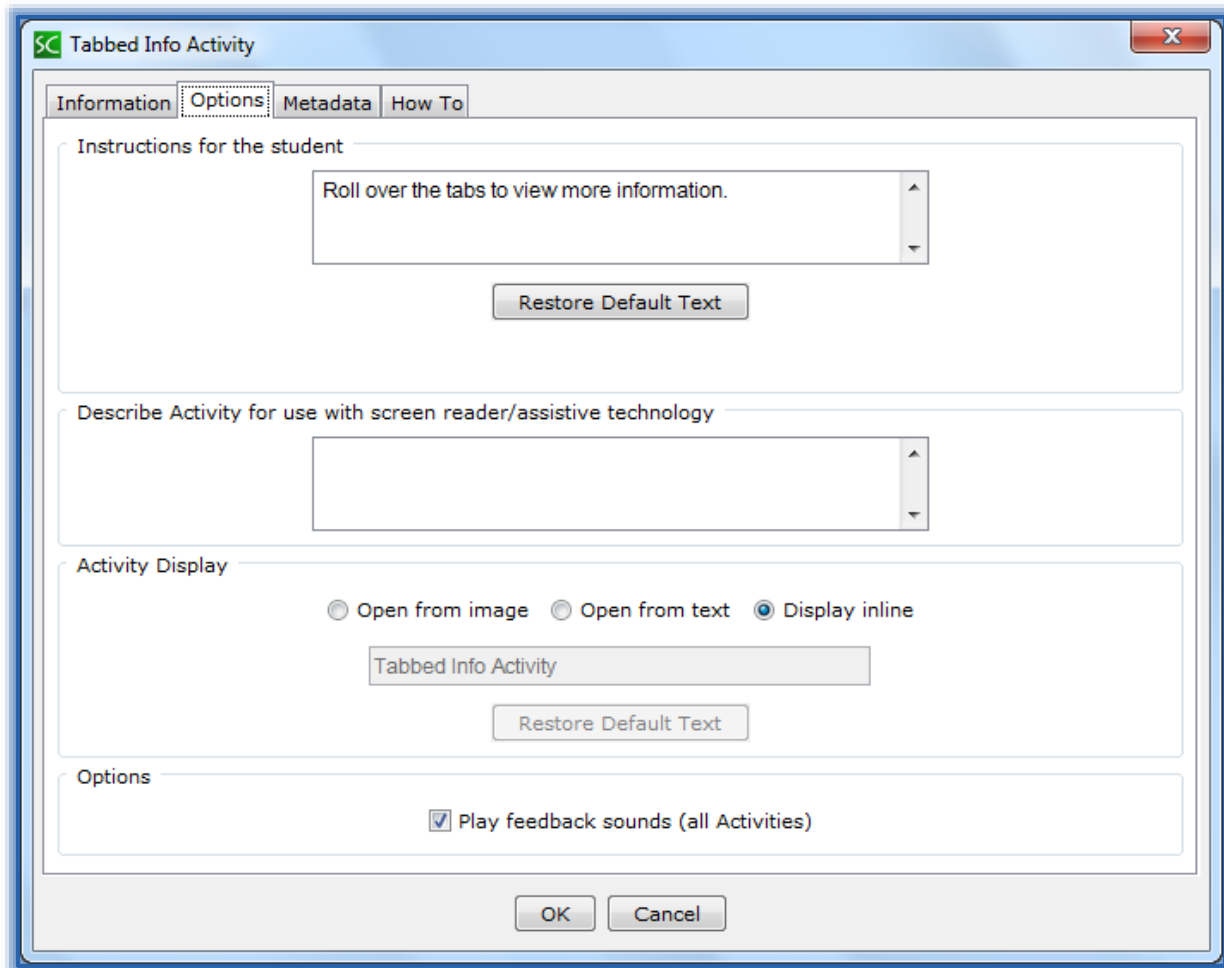
- Select the **Tab Location**. The options are **Top**, **Right**, **Bottom**, or **Left**.
- Click **Tab 1** if necessary.
- Select a **Color** for the **Tab**.
- Input a **Title** for the **Tab**.
- Input the **Content** for the **Tab**. This is the information that will display when the student moves the mouse pointer over the **Tab**.
- Select an **Image** for the **Tab** by clicking **File**, **Cloud**, **Library**, or **Equation**.
- Click the **New Tab** button to add another tab.
- Complete the same process as above to add all the other **Tabs**. You can add a **Maximum of 8 Tabs**.

- Once all the **Tabs** have been added, click the **OK** button.
- The **Tabbed Info Activity Placeholder** will appear in the **Lesson** (see illustration below).



OPTIONS

- Click the **Options** tab (see illustration below).



- 🖨 Input instructions for the students into the appropriate box.
- 🖨 Insert a description of the **Activity** for those students who are visually impaired.
- 🖨 Click the **Display Inline** check box if the **Activity** is to display directly within the **Lesson**.
- 🖨 Click the **Play Feedback Sounds** check box to allow the **Activity** to play a sound when **Feedback** is selected.
- 🖨 When all the **Options** have been chosen, click the **OK** button.
- 🖨 The **Tabbed Info Activity Placeholder** will appear in the **Lesson**.

EDIT ACTIVITY


- 🖨 Right-click on the **Tabbed Info Activity Placeholder**.
- 🖨 Select **Modify Activity** from the list.
- 🖨 Make the necessary changes to the **Activity**.
- 🖨 Click the **OK** button.

VIEW ACTIVITY IN BROWSER

- 🖨 **Save the Lesson.**
- 🖨 Click the **View in Browser** button on the **SoftChalk Toolbar** (see illustration at right).
- 🖨 The **Activity** will appear as shown in the illustration below.
- 🖨 Move the mouse over each **Tab** to display the information.



🔑 Roll over the tabs to view more information.

Organizing	Writing	Reading	Communicatic	Input Devices	Output Devices
<div style="display: flex; align-items: flex-start;">  <div> <p>Writing</p> <p>Special Need</p> <p>Assist students with coordination difficulties in creating clear, precise, and legible communication</p> <p>Technology Solutions</p> <p>Word Processing Software</p> <p>Word Prediction Software</p> <p>Text-to-Speech Software</p> </div> </div>					