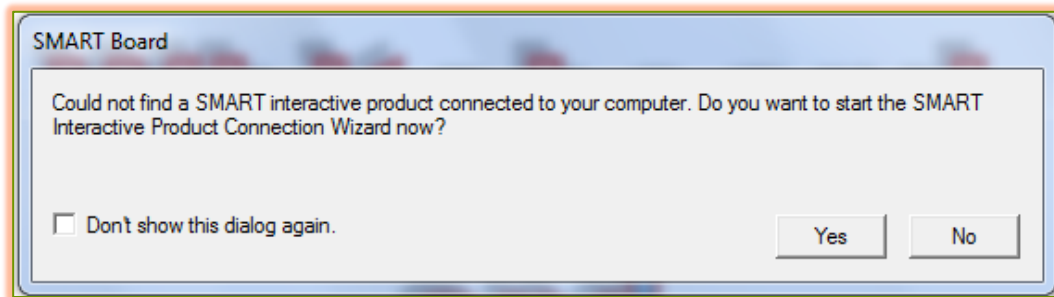


START THE SMART BOARD

Before the SMART Board can be used, it is necessary to turn the computer and the SMART Board on. A desktop computer is installed with the SMART Board. The projector can be part of the SMART Board or a separate projector mounted on the ceiling.

SMART BOARD WITH BUILD IN PROJECTOR

- ✦ Turn on the computer.
- ✦ Log on to the computer.
- ✦ If the message in the illustration below appears, click **No**.



- ✦ Turn on the **SMART Board** by pressing the **orange** button on the right side of the board.
- ✦ When the **Power Button Light** turns green the **SMART Board** is on; the computer and the **SMART Board** have established communication.
- ✦ The **SMART Board** draws power from the computer and will, therefore, activate automatically.
- ✦ Once that communication is established, the **SMART Board** will be touch sensitive.

SMART BOARD WITH EXTERNAL PROJECTOR

- ✦ **Turn on** the computer.
- ✦ **Log on** to the computer.
- ✦ **Turn on** the projector. A remote for the projector should be located somewhere near the computer.
- ✦ The **SMART Board** draws power from the computer and will, therefore, activate automatically.
- ✦ Check to make sure the **Ready Light** is on.
 - ✦ This will indicate that the **SMART Board** has power.
 - ✦ When the **Ready Light** turns **green**, the computer and the **SMART Board** have established communication.
- ✦ The **SMART Board** should now be **touch sensitive**.
- ✦ Open the application that is to be used for the presentation.