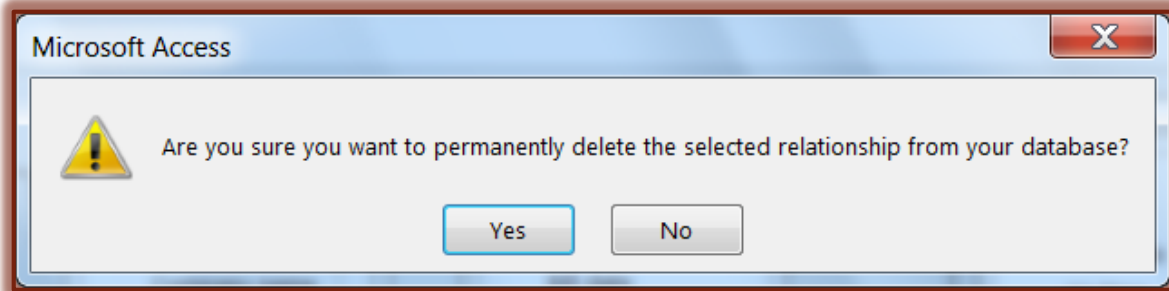
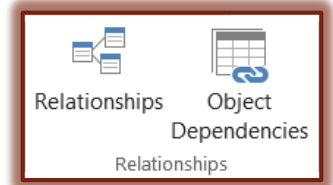


DELETE TABLE RELATIONSHIPS

Once a relationship has been established between two or more tables, it sometimes becomes necessary to remove the relationship. When removing a relationship, it is important to consider the reason for the relationship and how it will affect other items in the database, such as queries, forms, and reports. To delete a table relationship, complete the steps below.

- ✦ Open **Access Training-Database2**, if necessary.
- ✦ Click the **Database Tools Tab**.
- ✦ In the **Show/Hide Group**, click the **Relationships** button.
- ✦ The **Table Relationships** window will display.
- ✦ Select the line that joins the **Representatives** and **Clients** boxes.
- ✦ Do one of the following:
 - ✧ Press the **Delete** key on the keyboard.
 - ✧ Right-click the line and then select **Delete**.
- ✦ A confirmation box will appear asking if you are sure you want to permanently delete the selected relationship (see illustration below).



- ✦ Click **Yes** to permanently delete the relationship.
 - ✧ The relationship between the two tables will be removed.
 - ✧ Once **Yes** has been selected, it is not possible to Undo the deletion.