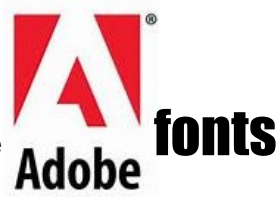


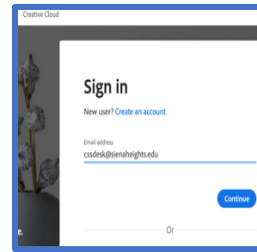
Downloading new accessible



## Windows & Mac Devices

Log on your Adobe manager account, from the **Creative Cloud sigma icon**.

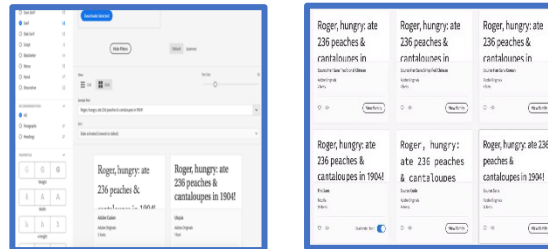
1. On the **Windows Computer**, the **Adobe CC icon** is located under the **^** on the far-right corner of your taskbar.
2. On the **Mac-computer** the **Adobe CC icon** is located on the top right corner of the device.



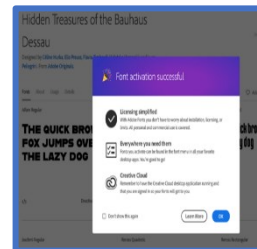
From the top right-hand corner of the **Creative Cloud desktop menu**, click on the **F** for the fonts download feature. Click on **“Browse all fonts.”**



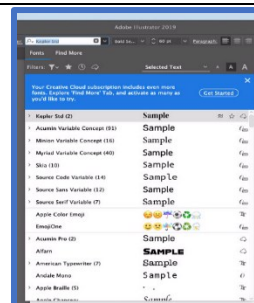
Under the **left heading tab**, browse fonts, click under the **classification** for the **font style** you would like to select from to show on display. Under the **Sample text**, either select the **default text** from the drop-down menu or type in your text to sample.



Pending on the **classification, setting** and **size** you click, you will see a display of font styles to pick from. Scroll down to the **Kepler** font, click on **view family button**. click on the **activate** button of the text you would like to use in your designs, and then on the **O.K. button**. Other fonts can be downloaded from the **font packs** tab on the top of the **font menu**.



Next, open up the **Illustrator CC** or **Photoshop CC** application, and the recent download fonts will appear in any **Adobe CC** program font menu. Upon looking at your font menu, the **font Kepler** will show up and display a cloud icon on the right initiates which is was downloaded from Adobe.



To recap your downloaded **Font selections** are located in the **Adobe manager menu**, open the menu by clicking on the **F**, and you will be able to view all of your **activated fonts** you have recently download.

