

Mac VPN Global Portal

From the Google Chrome browser, download the VPN client by clicking on the following link.

<https://vpn.sienaheights.edu>.

Log in using your following Siena Heights Credentials.

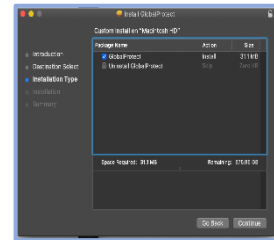
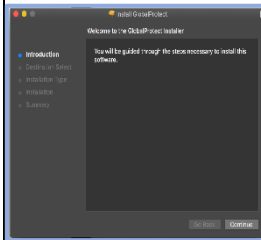
Username: yourname@sienaheights.edu

Password: your mysiena password

Next, click on the **login button**. Click on the **Download Mac 32/64-bit Global Protect agent link**. From the lower-left corner of the Google Chrome web site click on the **client download**.

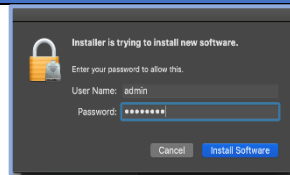


Begin the install and click on the **Continue button from the GlobalProtect menu**. Next, click on the **continue button, to install on your Mac Hd**. The last menu will be the Custom Install on the MacHD, click on the **Continue button**, and **then install**, to complete the installation.

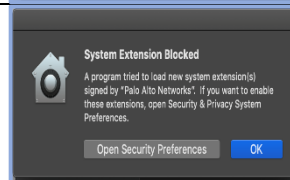


Installation Secure Setup VPN

Next, the **Installer** menu message is trying to install new software. Type in your **user or admin name and password** from your Mac computer, and click on the **Install Software button**.

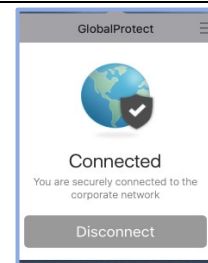
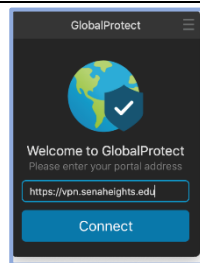


The System Extension Blocked, click on the **Open security Preferences button, to allow the Software to be installed on your computer**, and from the **Security & Privacy icon, under the General tab**.



On the top right corner of your mac, is the Global connect which will look like a world icon, click on the icon one time and enter the portal address, <https://vpn.sienaheights.edu>, and then click on the **connect button**.

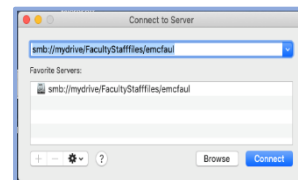
Next, type in your Username and Password, from your mysiena account, and then **click on the connect button**.



Mapping your Sienanet Drive to your Mac computer

Once you have connected to the **Global Protect**, on your keyboard, simultaneously, click on the **Command + K**, and type the following information under the **Connect to Server menu**, open slot.

smb://mydrive/facultystafffiles/yourusername, and then click on the **connect button**.



Your username account will appear in the finder open menu. By clicking on your username under the **favorites section of your finder**, the new location is a first-rate way to move, open and save your network files to your network drive.

